

Datasheet for ABIN340308

anti-CRLF2 antibody (Carboxyfluorescein (CFS))**1** Image[Go to Product page](#)

Overview

Quantity:	100 tests
Target:	CRLF2
Reactivity:	Mouse
Host:	Goat
Clonality:	Polyclonal
Conjugate:	This CRLF2 antibody is conjugated to Carboxyfluorescein (CFS)
Application:	Flow Cytometry (FACS)

Product Details

Immunogen:	Recombinant mouse TSLP R extracellular domain
	Type of Immunogen: Recombinant protein
Isotype:	IgG
Specificity:	Recognizes mouse TSLP receptor.
Purification:	Purified

Target Details

Target:	CRLF2
Alternative Name:	CRLF2 / TSLPR (CRLF2 Products)
Background:	Name/Gene ID: CRLF2

Target Details

Synonyms: CRLF2, IL-XR, ILXR, p2RY8/CRLF2 fusion, TSLP receptor, TSLPR, CRL2, CRLF2Y, Cytokine receptor-like 2

Gene ID: 64109

Application Details

Application Notes: Approved: Flo

Usage: Suitable for use in flow cytometry. The applications listed have been tested for the unconjugated form of this product. Other forms have not been tested.

Comment: Target Species of Antibody: Mouse

Restrictions: For Research Use only

Handling

Format: Liquid

Concentration: Lot specific

Buffer: PBS, 0.09 % sodium azide, 0.5 % BSA.

Preservative: Sodium azide

Precaution of Use: This product contains Sodium azide: a POISONOUS AND HAZARDOUS SUBSTANCE which should be handled by trained staff only.

Handling Advice: Avoid freeze-thaw cycles and prolonged exposure to light. Store undiluted.

Storage: 4 °C, -20 °C

Storage Comment: Short term: store at 4°C. Long term: aliquot and store -20°C. Avoid freeze-thaw cycles. Protect from light. Store undiluted.

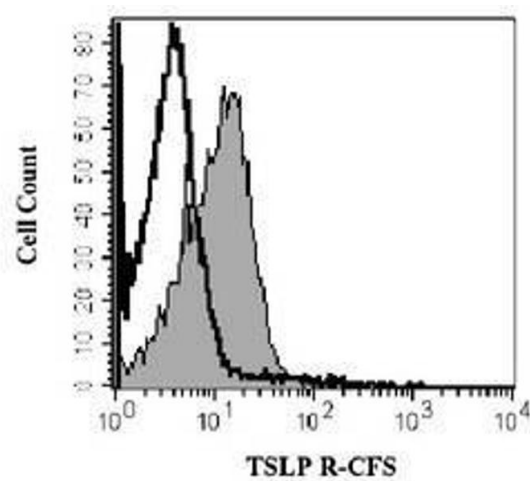


Image 1.