

Datasheet for ABIN341033 **anti-MAD1L1 antibody**



[Go to Product page](#)

1 Image

Overview

Quantity:	0.1 mL
Target:	MAD1L1
Reactivity:	Human
Host:	Mouse
Clonality:	Monoclonal
Conjugate:	This MAD1L1 antibody is un-conjugated
Application:	Western Blotting (WB), Immunofluorescence (IF), Immunoprecipitation (IP)

Product Details

Immunogen:	Recombinant full length MAD1 protein (human). Type of Immunogen: Recombinant protein
Clone:	9B10
Isotype:	IgG2b
Specificity:	Human MAD1
Purification:	Protein A purified

Target Details

Target:	MAD1L1
Alternative Name:	MAD1L1 / MAD1 (MAD1L1 Products)

Target Details

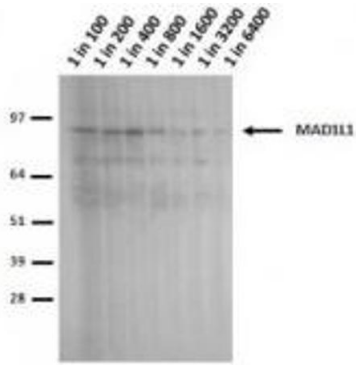
Background:	Name/Gene ID: MAD1L1 Synonyms: MAD1L1, HMAD1, MAD1, MAD1-like protein 1, Tax-binding protein 181, TP53I9, PIG9, HSMAD1, Tax1-binding protein txbp181, TXBP181
Gene ID:	8379
UniProt:	Q9Y6D9
Pathways:	M Phase

Application Details

Application Notes:	Approved: IF (1:500 - 1:1000, 1 - 2 µg/mL), IP, WB
Comment:	Target Species of Antibody: Human
Restrictions:	For Research Use only

Handling

Format:	Liquid
Concentration:	Lot specific
Buffer:	PBS, 0.1 % sodium azide.
Preservative:	Sodium azide
Precaution of Use:	This product contains Sodium azide: a POISONOUS AND HAZARDOUS SUBSTANCE which should be handled by trained staff only.
Handling Advice:	Avoid repeat freeze-thaw cycles.
Storage:	4 °C, -20 °C
Storage Comment:	Short term: 4°C. Long term: Store at -20°C. Avoid freeze-thaw cycles.



HeLa lysate run on 4-12% Bis-Tris 2D gel in 1x MOPS running buffer. Transfer to 0.45µm nitrocellulose. Membrane probed with P22.9B10.F6 (anti-MAD1L1). Anti-mouse IgG (whole molecule)-AP conjugate (1 in 2,000). Detection with BCIP/NBT substrate.

Image 1.