

Datasheet for ABIN341075 **anti-CENPE antibody**



[Go to Product page](#)

1 Image

Overview

Quantity:	0.05 mg
Target:	CENPE
Reactivity:	Human
Host:	Mouse
Clonality:	Monoclonal
Conjugate:	This CENPE antibody is un-conjugated
Application:	Western Blotting (WB), Immunoprecipitation (IP), Immunocytochemistry (ICC), Immunofluorescence (IF)

Product Details

Immunogen:	Recombinant human CENP-E. Type of Immunogen: Recombinant protein
Clone:	1H12
Isotype:	IgG1
Specificity:	Human CENP-E. Not tested on reactivity with rodents or other vertebrates
Purification:	Ion exchange chromatography

Target Details

Target:	CENPE
Alternative Name:	CENPE (CENPE Products)

Target Details

Background:	Name/Gene ID: CENPE Synonyms: CENPE, CENP-E, Centromere protein E, Centromere protein E (312kD), Kinesin-related protein CENPE, PPP1R61, KIF10, Centromere protein E, 312 kDa, Kinesin family member 10
Gene ID:	1062
UniProt:	Q02224
Pathways:	M Phase, Maintenance of Protein Location

Application Details

Application Notes:	Approved: ICC (0.5 - 1 µg/mL), IF, IP, WB
Comment:	Target Species of Antibody: Human
Restrictions:	For Research Use only

Handling

Format:	Liquid
Concentration:	Lot specific
Buffer:	PBS, 0.1 % sodium azide.
Preservative:	Sodium azide
Precaution of Use:	This product contains Sodium azide: a POISONOUS AND HAZARDOUS SUBSTANCE which should be handled by trained staff only.
Handling Advice:	Avoid repeat freeze-thaw cycles.
Storage:	4 °C,-20 °C
Storage Comment:	Short term: 4°C. Long term: Store at -20°C. Avoid freeze-thaw cycles.

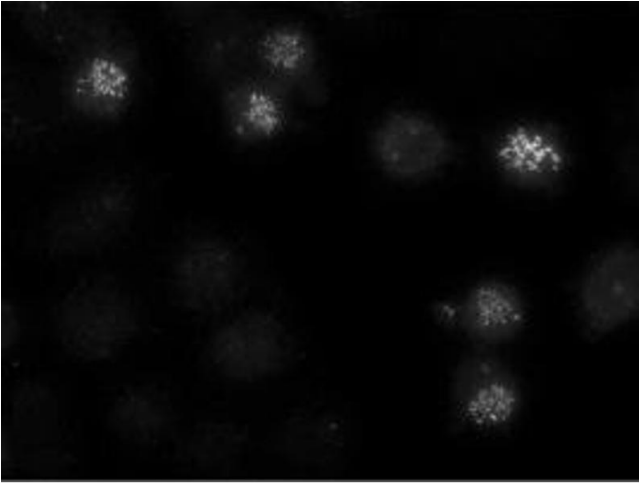


Image 1.