

Datasheet for ABIN341119  
**anti-KPNA2 antibody (AA 116-515)**



[Go to Product page](#)

1 Image

## Overview

Quantity:	0.05 mg
Target:	KPNA2
Binding Specificity:	AA 116-515
Reactivity:	Human
Host:	Rat
Clonality:	Monoclonal
Conjugate:	This KPNA2 antibody is un-conjugated
Application:	Western Blotting (WB)

## Product Details

Immunogen:	Amino acids 116-515.
Clone:	2G7
Isotype:	IgG2a
Specificity:	Human Karyopherin alpha 2
Purification:	Protein G purified

## Target Details

Target:	KPNA2
Alternative Name:	KPNA2 / Importin Alpha 1 ( <a href="#">KPNA2 Products</a> )
Background:	Name/Gene ID: KPNA2

## Target Details

---

Synonyms: KPNA2, Importin alpha 2, Importin subunit alpha-2, IPOA1, Importin alpha-2 subunit, Karyopherin subunit alpha-2, Importin-alpha-P1, Qip2, RAG cohort 1, SRP1, RCH1, SRP1-alpha, SRP1alpha, Importin alpha 1, Pendulin, RAG cohort protein 1

Gene ID: 3838

UniProt: [P52292](#)

Pathways: [M Phase](#), [Protein targeting to Nucleus](#)

## Application Details

---

Application Notes: Approved: WB (1:1000)

Comment: Target Species of Antibody: Human

Restrictions: For Research Use only

## Handling

---

Format: Liquid

Concentration: Lot specific

Buffer: PBS, 0.1 % sodium azide.

Preservative: Sodium azide

Precaution of Use: This product contains Sodium azide: a POISONOUS AND HAZARDOUS SUBSTANCE which should be handled by trained staff only.

Handling Advice: Avoid repeat freeze-thaw cycles.

Storage: 4 °C, -20 °C

Storage Comment: Short term: 4°C. Long term: Store at -20°C. Avoid freeze-thaw cycles.

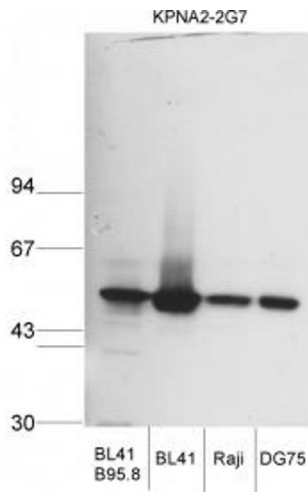


Image 1.