

Datasheet for ABIN341310
anti-TARS antibody (AA 51-100)

2 Images

[Go to Product page](#)

Overview

Quantity:	100 µL
Target:	TARS
Binding Specificity:	AA 51-100
Reactivity:	Human, Mouse, Rat, Dog, Rabbit, Cow, Zebrafish (Danio rerio), Guinea Pig, Horse, Monkey, Chicken, Drosophila melanogaster, Hamster
Host:	Rabbit
Clonality:	Polyclonal
Conjugate:	This TARS antibody is un-conjugated
Application:	Western Blotting (WB), Immunohistochemistry (IHC), Immunohistochemistry (Paraffin-embedded Sections) (IHC (p))

Product Details

Immunogen:	Synthetic peptide located between aa51-100 of human TARS (Q5M7Z9). Percent identity by BLAST analysis: Human, Chimpanzee, Gorilla, Gibbon, Galago, Marmoset, Mouse, Rat, Hamster, Panda, Dog, Bovine, Rabbit, Horse, Guinea pig, Turkey, Chicken, Drosophila (100%), Elephant, Zebra finch, Platypus (92%), Bat, Opossum, Xenopus (85%), Zebrafish (84%). Type of Immunogen: Synthetic peptide
Isotype:	IgG
Specificity:	Human TARS
Predicted Reactivity:	Percent identity by BLAST analysis: Human, Mouse, Rat, Dog, Horse, Guinea pig, Chicken

Product Details

(100%) Xenopus (85%) Zebrafish (84%).

Purification: Protein A purified

Target Details

Target: TARS

Alternative Name: TARS ([TARS Products](#))

Background: Name/Gene ID: TARS

Synonyms: TARS, Threonyl-tRNA synthetase, ThrRS

Gene ID: 6897

UniProt: [P26639](#)

Application Details

Application Notes: Approved: IHC, IHC-P, WB

Usage: ELISA titer using peptide based assay: 1:62500. Western Blot: Suggested dilution at 5.0 µg/mL in 5 % skim milk / PBS buffer, and HRP conjugated anti-Rabbit IgG should be diluted in 1:50000 - 100000 as second antibody.

Comment: Target Species of Antibody: Human

Restrictions: For Research Use only

Handling

Format: Lyophilized

Reconstitution: Distilled Water.

Concentration: Lot specific

Buffer: Lyophilized from PBS with 2 % sucrose

Handling Advice: Avoid repeat freeze-thaw cycles.

Storage: 4 °C,-20 °C

Storage Comment: Long term: -20°C, the use of 50% glycerol is recommended if storing aliquots in -20°C for long term use (up to 1 year)

Handling

Short term (less than 1 week): 4°C. Avoid freeze-thaw cycles.

Images

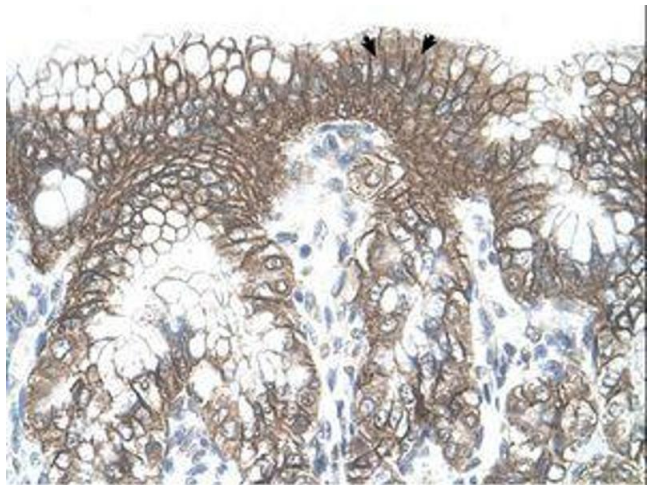


Image 1.

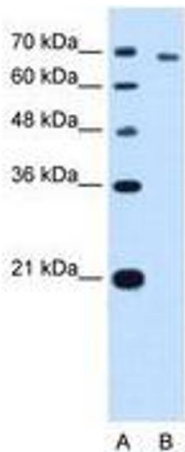


Image 2.