



[Go to Product page](#)

Datasheet for ABIN341313
anti-WSCD2 antibody (C-Term)

1 Image

Overview

Quantity:	100 µL
Target:	WSCD2
Binding Specificity:	C-Term
Reactivity:	Human, Dog, Cow, Zebrafish (Danio rerio), Guinea Pig, Horse, Bat, Monkey, Pig
Host:	Rabbit
Clonality:	Polyclonal
Conjugate:	This WSCD2 antibody is un-conjugated
Application:	Western Blotting (WB)

Product Details

Immunogen:	Synthetic peptide from C-Terminus of human WSCD2 (Q2TBF2, NP_055468). Percent identity by BLAST analysis: Human, Chimpanzee, Gorilla, Gibbon, Monkey, Marmoset, Elephant, Dog, Bovine, Bat, Horse, Pig, Opossum, Guinea pig (100%), Rabbit, Turkey, Chicken (92%), Xenopus (84%). Type of Immunogen: Synthetic peptide
Isotype:	IgG
Specificity:	Human WSCD2
Predicted Reactivity:	Percent identity by BLAST analysis: Human, Dog, Bovine, Horse, Pig (100%) Rabbit, Chicken (92%).
Purification:	Protein A purified

Target Details

Target:	WSCD2
Alternative Name:	WSCD2 (WSCD2 Products)
Background:	Name/Gene ID: WSCD2 Synonyms: WSCD2, KIAA0789, WSC domain containing 2
Gene ID:	9671
NCBI Accession:	NP_055468
UniProt:	Q2TBF2

Application Details

Application Notes:	Approved: WB Usage: ELISA titer using peptide based assay: 1:1562500. Western Blot: Suggested dilution at 1.25 µg/mL in 5 % skim milk / PBS buffer, and HRP conjugated anti-Rabbit IgG should be diluted in 1:50000 - 100000 as second antibody.
Comment:	Target Species of Antibody: Human
Restrictions:	For Research Use only

Handling

Format:	Lyophilized
Reconstitution:	Distilled Water.
Concentration:	Lot specific
Buffer:	Lyophilized from PBS with 2 % sucrose
Handling Advice:	Avoid repeat freeze-thaw cycles.
Storage:	4 °C, -20 °C
Storage Comment:	Long term: -20°C, the use of 50% glycerol is recommended if storing aliquots in -20°C for long term use (up to 1 year) Short term (less than 1 week): 4°C. Avoid freeze-thaw cycles.

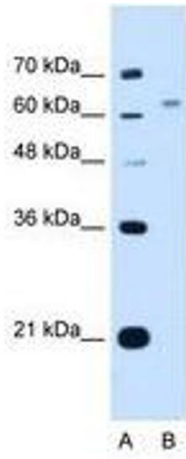


Image 1.