



Datasheet for ABIN341360  
**anti-PCMTD1 antibody (AA 201-250)**



[Go to Product page](#)

1 Image

Overview

Quantity:	100 µL
Target:	PCMTD1
Binding Specificity:	AA 201-250
Reactivity:	Human, Mouse, Rat, Cow, Dog, Guinea Pig, Horse, Rabbit, Hamster, Pig
Host:	Rabbit
Clonality:	Polyclonal
Conjugate:	This PCMTD1 antibody is un-conjugated
Application:	Western Blotting (WB)

Product Details

Immunogen:	Synthetic peptide located between aa201-250 of human PCMTD1 (Q96MG8, NP_443169). Percent identity by BLAST analysis: Human, Chimpanzee, Gorilla, Orangutan, Gibbon, Galago, Marmoset, Mouse, Rat, Hamster, Elephant, Panda, Dog, Bovine, Rabbit, Horse, Pig, Guinea pig (100%), Monkey (92%), Turkey, Chicken, Platypus (85%).  Type of Immunogen: Synthetic peptide
Isotype:	IgG
Specificity:	Human PCMTD1
Predicted Reactivity:	Percent identity by BLAST analysis: Human, Mouse, Dog, Rabbit, Horse (100%).
Purification:	Protein A purified

## Target Details

---

Target:	PCMTD1
Alternative Name:	PCMTD1 ( <a href="#">PCMTD1 Products</a> )
Background:	Name/Gene ID: PCMTD1  Synonyms: PCMTD1
Gene ID:	115294
NCBI Accession:	<a href="#">NP_443169</a>
UniProt:	<a href="#">Q96MG8</a>

## Application Details

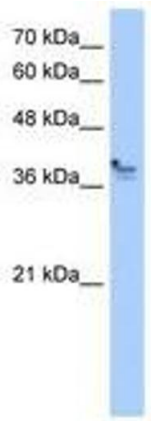
---

Application Notes:	Approved: WB  Usage: ELISA titer using peptide based assay: 1:1562500. Western Blot: Suggested dilution at 2.5 µg/mL in 5 % skim milk / PBS buffer, and HRP conjugated anti-Rabbit IgG should be diluted in 1:50000 - 100000 as second antibody.
Comment:	Target Species of Antibody: Human
Restrictions:	For Research Use only

## Handling

---

Format:	Lyophilized
Reconstitution:	Distilled Water.
Concentration:	Lot specific
Buffer:	Lyophilized from PBS with 2 % sucrose
Handling Advice:	Avoid repeat freeze-thaw cycles.
Storage:	4 °C,-20 °C
Storage Comment:	Long term: -20°C, the use of 50% glycerol is recommended if storing aliquots in -20°C for long term use (up to 1 year)  Short term (less than 1 week): 4°C. Avoid freeze-thaw cycles.



**Image 1.**