



[Go to Product page](#)

Datasheet for ABIN341394  
**anti-ELOVL7 antibody (N-Term)**

1 Image

Overview

Quantity:	100 µL
Target:	ELOVL7
Binding Specificity:	N-Term
Reactivity:	Human, Rat, Dog, Horse, Pig
Host:	Rabbit
Clonality:	Polyclonal
Conjugate:	This ELOVL7 antibody is un-conjugated
Application:	Western Blotting (WB)

Product Details

Immunogen:	Synthetic peptide from N-Terminus of human ELOVL7 (A1L3X0, NP_079206). Percent identity by BLAST analysis: Human, Chimpanzee, Gorilla, Gibbon, Rat, Opossum (100%), Galago, Marmoset, Elephant, Panda, Bovine, Bat, Rabbit (92%), Mouse, Dog, Horse, Pig, Guinea pig (85%).  Type of Immunogen: Synthetic peptide
Isotype:	IgG
Specificity:	Human ELOVL7
Predicted Reactivity:	Percent identity by BLAST analysis: Human (100%) Rat, Dog, Horse, Pig (85%).
Purification:	Protein A purified

## Target Details

---

Target: ELOVL7

Alternative Name: ELOVL7 ([ELOVL7 Products](#))

Background: Name/Gene ID: ELOVL7

Synonyms: ELOVL7, ELOVL FA elongase 7, ELOVL fatty acid elongase 7

Gene ID: 79993

NCBI Accession: [NP\\_079206](#)

UniProt: [A1L3X0](#)

## Application Details

---

Application Notes: Approved: WB

Usage: ELISA titer using peptide based assay: 1:312500. Western Blot: Suggested dilution at 1.25 µg/mL in 5 % skim milk / PBS buffer, and HRP conjugated anti-Rabbit IgG should be diluted in 1:50000 - 100000 as second antibody.

Comment: Target Species of Antibody: Human

Restrictions: For Research Use only

## Handling

---

Format: Lyophilized

Reconstitution: Distilled Water.

Concentration: Lot specific

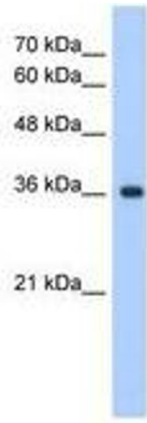
Buffer: Lyophilized from PBS with 2 % sucrose

Handling Advice: Avoid repeat freeze-thaw cycles.

Storage: 4 °C, -20 °C

Storage Comment: Long term: -20°C, the use of 50% glycerol is recommended if storing aliquots in -20°C for long term use (up to 1 year)

Short term (less than 1 week): 4°C. Avoid freeze-thaw cycles.



**Image 1.**