

Datasheet for ABIN341411
anti-TOR2A antibody (AA 51-100)[Go to Product page](#)

1 Image

Overview

Quantity:	100 µL
Target:	TOR2A
Binding Specificity:	AA 51-100
Reactivity:	Human, Mouse, Cow, Dog, Guinea Pig, Bat, Monkey
Host:	Rabbit
Clonality:	Polyclonal
Conjugate:	This TOR2A antibody is un-conjugated
Application:	Western Blotting (WB)

Product Details

Immunogen:	Synthetic peptide located between aa51-100 of human TOR2A (Q5JU69, NP_001078816). Percent identity by BLAST analysis: Human, Chimpanzee, Gorilla, Gibbon, Monkey, Galago, Marmoset, Mouse, Elephant, Dog, Bovine, Bat, Opossum, Guinea pig (100%), Rat, Panda, Horse, Pig (92%). Type of Immunogen: Synthetic peptide
Isotype:	IgG
Specificity:	Human TOR2A
Predicted Reactivity:	Percent identity by BLAST analysis: Human, Mouse, Dog, Bovine (100%) Rat, Pig (92%).
Purification:	Protein A purified

Target Details

Target:	TOR2A
Alternative Name:	TOR2A (TOR2A Products)
Background:	Name/Gene ID: TOR2A Synonyms: TOR2A, Prosalusin, Torsin-related protein 1, Torsin family 2, member A, TORP1, Torsin family 2 member A, Torsin-2A
Gene ID:	27433
NCBI Accession:	NP_001078816
UniProt:	Q5JU69

Application Details

Application Notes:	Approved: WB Usage: ELISA titer using peptide based assay: 1:1562500. Western Blot: Suggested dilution at 1.25 µg/mL in 5 % skim milk / PBS buffer, and HRP conjugated anti-Rabbit IgG should be diluted in 1:50000 - 100000 as second antibody.
Comment:	Target Species of Antibody: Human
Restrictions:	For Research Use only

Handling

Format:	Lyophilized
Reconstitution:	Distilled Water.
Concentration:	Lot specific
Buffer:	Lyophilized from PBS with 2 % sucrose
Handling Advice:	Avoid repeat freeze-thaw cycles.
Storage:	4 °C,-20 °C
Storage Comment:	Long term: -20°C, the use of 50% glycerol is recommended if storing aliquots in -20°C for long term use (up to 1 year) Short term (less than 1 week): 4°C. Avoid freeze-thaw cycles.

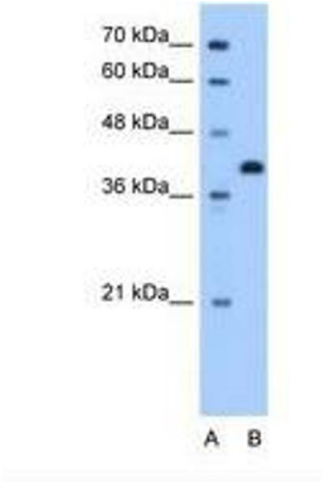


Image 1.