

Datasheet for ABIN343715  
**anti-CD9 antibody**



[Go to Product page](#)

**2** Images

## Overview

|              |  |
|--------------|--|
| Quantity:    | 100 µg   |
| Target:      | CD9  |
| Reactivity:  | Mouse  |
| Host:        | Rat  |
| Clonality:   | Monoclonal   |
| Conjugate:   | This CD9 antibody is un-conjugated   |
| Application: | Flow Cytometry (FACS), Western Blotting (WB), Immunoprecipitation (IP),<br>Immunocytochemistry (ICC) |

## Product Details

|                             |  |
|-----------------------------|--|
| Purpose:                    | Anti-Ms CD9 Purified   |
| Immunogen:                  | Permeabilized murine bone marrow-derived mast cells (BMMC).  |
| Clone:                      | EM-04  |
| Isotype:                    | IgG1   |
| Specificity:                | The rat monoclonal antibody EM-04 recognizes an extracellular epitope of CD9 antigen, a 24 kDa transmembrane protein expressed on platelets, monocytes, pre-B lymphocytes, granulocytes and activated T lymphocytes. |
| Cross-Reactivity (Details): | Mouse  |
| Purification:               | Purified by protein-G affinity chromatography.   |
| Purity:                     | > 95 % (by SDS-PAGE)   |

## Target Details

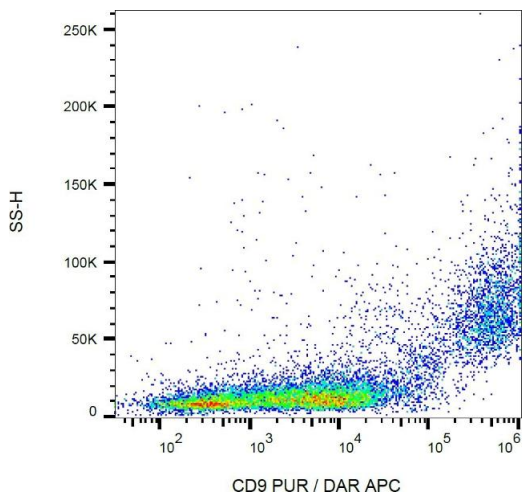
|                   |  |
|-------------------|--|
| Target:           | CD9  |
| Alternative Name: | CD9 ( <a href="#">CD9 Products</a> )   |
| Background:       | CD9 Molecule,CD9 belongs to proteins of tetraspanin family that orchestrate cholesterol-associated tetraspanin-enriched signaling microdomains within the plasma membrane, forming complexes with each other as well as with integrins, membrane-anchored growth factors and other proteins. CD9 is involved in cell motility, osteoclastogenesis, neurite outgrowth, myotube formation, and sperm-egg fusion, plays roles in cell attachment and proliferation and is necessary for association of heterologous MHC II molecules on the dendritic cell plasma membrane which is important for effective T cell stimulation. CD9 is also considered as metastasis suppressor in solid tumors.,Mic3, Mrp-1, Btcc-1, Drap-27, Tspan-29 |
| Gene ID:          | 12527  |
| UniProt:          | <a href="#">P40240</a>   |
| Pathways:         | <a href="#">Response to Water Deprivation, Cell-Cell Junction Organization</a>   |

## Application Details

|                    |   |
|--------------------|---|
| Application Notes: | Flow cytometry: Recommended dilution: 4 µg/mL.<br>Western blotting: Recommended dilution: 1 µg/mL, non-reducing conditions. |
| Restrictions:      | For Research Use only   |

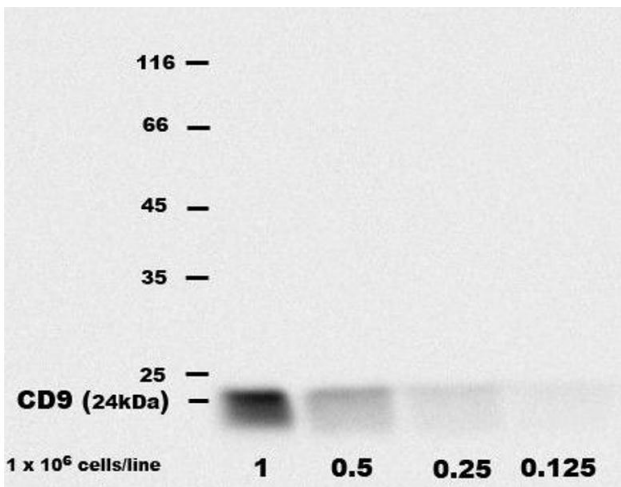
## Handling

|                    |  |
|--------------------|--|
| Concentration:     | 1 mg/mL  |
| Buffer:            | Phosphate buffered saline (PBS), pH 7.4, 15 mM sodium azide  |
| Preservative:      | Sodium azide   |
| Precaution of Use: | This product contains Sodium azide: a POISONOUS AND HAZARDOUS SUBSTANCE which should be handled by trained staff only. |
| Handling Advice:   | <b>Do not freeze.</b>  |
| Storage:           | 4 °C   |
| Storage Comment:   | Store at 2-8°C. Do not freeze.   |



Flow Cytometry

**Image 1.** Flow cytometry analysis (surface staining) of CD9 in murine peritoneal fluid cells with anti-CD9 (EM-04) purified, DAR-APC.



Western Blotting

**Image 2.** Detection of CD9 in bone marrow-derived mast cell (BMMC) lysates by rat monoclonal EM-04 antibody.