

Datasheet for ABIN343747
anti-FHL3 antibody (C-Term)[Go to Product page](#)

1 Image

Overview

Quantity:	100 µg
Target:	FHL3
Binding Specificity:	C-Term
Reactivity:	Human, Mouse, Rat
Host:	Goat
Clonality:	Polyclonal
Conjugate:	This FHL3 antibody is un-conjugated
Application:	Western Blotting (WB), ELISA

Product Details

Purpose:	FHL3 / SLIM2
Immunogen:	Peptide with sequence DQVLCQGCSQAGP, from the C Terminus of the protein sequence according to NP_004459.2
Sequence:	DQVLCQGCSQ AGP
Isotype:	IgG
Cross-Reactivity:	Cow, Human, Mouse, Pig, Rat
Purification:	Purified from goat serum by ammonium sulphate precipitation followed by antigen affinity chromatography using the immunizing peptide.
Grade:	Verified

Target Details

Target:	FHL3
Alternative Name:	FHL3 (FHL3 Products)
Background:	FHL3, SLIM2, four and a half LIM domains 3, LIM-only protein FHL3, MGC19547, MGC23614, MGC8696
Gene ID:	2275, 56726, 302363
NCBI Accession:	NP_004459

Application Details

Application Notes:	Western Blot: Approx 30 kDa band observed in Human, Mouse and Rat Skeletal Muscle lysates (calculated MW of 31.2 kDa according to NP_004459.2). Recommended concentration: 1-3 µg/mL. Peptide ELISA: antibody detection limit dilution 1:4000.
Restrictions:	For Research Use only

Handling

Format:	Liquid
Concentration:	0.5 mg/mL
Buffer:	Supplied at 0.5 mg/mL in Tris saline, 0.02 % sodium azide, pH 7.3 with 0.5 % bovine serum albumin.
Preservative:	Sodium azide
Precaution of Use:	This product contains Sodium azide: a POISONOUS AND HAZARDOUS SUBSTANCE which should be handled by trained staff only.
Handling Advice:	Minimize freezing and thawing.
Storage:	-20 °C
Storage Comment:	Aliquot and store at -20°C, with minimal freeze/thawing. A working aliquot may be refrigerated at 4°C for a few weeks and still remain viable.

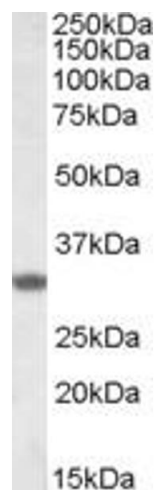


Image 1. EB06509 (1µg/ml) staining of Rat Skeletal Muscle lysate (35µg protein in RIPA buffer). Primary incubation was 1 hour. Detected by chemiluminescence.