



[Go to Product page](#)

Datasheet for ABIN343748
anti-RNF139 antibody (C-Term)

2 Images

Overview

Quantity:	100 µg
Target:	RNF139
Binding Specificity:	C-Term
Reactivity:	Human
Host:	Goat
Clonality:	Polyclonal
Conjugate:	This RNF139 antibody is un-conjugated
Application:	ELISA, Western Blotting (WB), Immunohistochemistry (IHC)

Product Details

Purpose:	TRC8
Immunogen:	Peptide with sequence C-HTGAAAEFFNDDT, from the C Terminus of the protein sequence according to NP_009149.2.
Sequence:	HTGAAAEFFN DDT
Isotype:	IgG
Cross-Reactivity:	Dog, Human
Purification:	Purified from goat serum by ammonium sulphate precipitation followed by antigen affinity chromatography using the immunizing peptide.
Grade:	Verified

Target Details

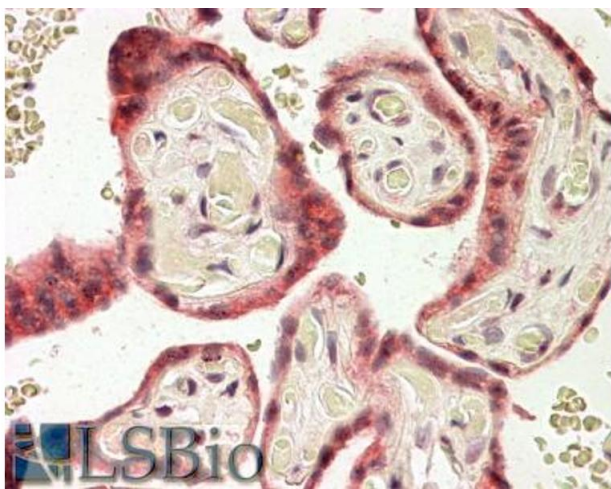
Target:	RNF139
Alternative Name:	RNF139 (RNF139 Products)
Background:	RNF139, ring finger protein 139, TRC8, HRCA1, MGC31961, RCA1, patched related protein translocated in renal cancer, multiple membrane spanning receptor TRC8
Gene ID:	11236
NCBI Accession:	NP_009149

Application Details

Application Notes:	Immunohistochemistry: In paraffin embedded Human Placenta shows membranous staining in the cytotrophoblasts. Recommended concentration, 3-4 µg/mL. Western Blot: Approx 75 kDa band observed in Human Skeletal Muscle lysates (calculated MW of 76.0 kDa according to NP_009149.2). Recommended concentration: 0.3-1 µg/mL. Peptide ELISA: antibody detection limit dilution 1:16000.
Restrictions:	For Research Use only

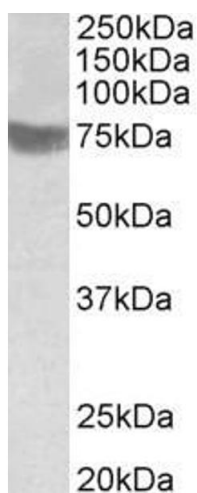
Handling

Format:	Liquid
Concentration:	0.5 mg/mL
Buffer:	Supplied at 0.5 mg/mL in Tris saline, 0.02 % sodium azide, pH 7.3 with 0.5 % bovine serum albumin.
Preservative:	Sodium azide
Precaution of Use:	This product contains Sodium azide: a POISONOUS AND HAZARDOUS SUBSTANCE which should be handled by trained staff only.
Handling Advice:	Minimize freezing and thawing.
Storage:	-20 °C
Storage Comment:	Aliquot and store at -20°C, with minimal freeze/thawing. A working aliquot may be refrigerated at 4°C for a few weeks and still remain viable.



Immunohistochemistry

Image 1. ABIN343748 (3.8 μ g/ml) staining of paraffin embedded Human Placenta. Steamed antigen retrieval with citrate buffer pH 6, AP-staining.



Western Blotting

Image 2. ABIN343748 (1 μ g/ml) staining of Human Skeletal Muscle lysate (35 μ g protein in RIPA buffer). Primary incubation was 1 hour. Detected by chemiluminescence.