

Datasheet for ABIN346940  
**anti-SLC6A1 antibody (C-Term)**[Go to Product page](#)

## 2 Images

## Overview

Quantity:	100 µL
Target:	SLC6A1 (GAT1)
Binding Specificity:	C-Term
Reactivity:	Rat
Host:	Rabbit
Clonality:	Polyclonal
Conjugate:	This SLC6A1 antibody is un-conjugated
Application:	Western Blotting (WB), ELISA, Immunohistochemistry (IHC)

## Product Details

Immunogen:	Synthetic peptide derived from C-term domain of the rat GAT-1 protein.
Isotype:	IgG
Specificity:	Reacts with 72 kDa GAT-1 from rat, mouse and human
Purification:	Antiserum

## Target Details

Target:	SLC6A1 (GAT1)
Alternative Name:	Sodium and Chloride-Dependent GABA Transporter 1 (GAT1) ( <a href="#">GAT1 Products</a> )
Background:	This sodium/neurotransmitter symporter family member is located in presynaptic terminals of interneurons.

## Target Details

Gene ID: 79212

UniProt: [P23978](#)

## Application Details

Application Notes: Working dilution: Optimal dilution should be determined by the end user.  
The following are guidelines only :  
IHC (1:50 - 1:500) WB (1:200 - 1:5000)

Restrictions: For Research Use only

## Handling

Format: Lyophilized

Reconstitution: Must be reconstituted in distilled water.

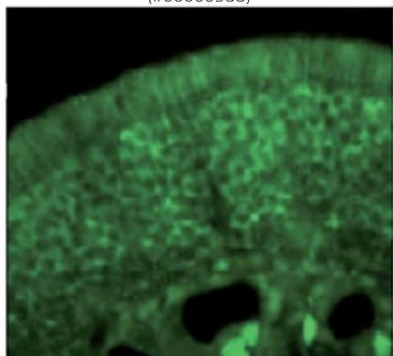
Storage: 4 °C/-20 °C

Storage Comment: Lyophilized powder stable for a minimum of 2 years at -20°C. Store reconstituted antibodies at +4°C. For extended periods store in aliquots at -20°C. Antibodies are guaranteed for 6 month from date of receipt.

Expiry Date: 24 months

## Images

### IHC - CRMP1 antibody (#00000588)



Olfactory receptor neurons stained in immuno-histochemistry with CRMP1 antibody

Image 1.

**WB - CRMP1 antibody**  
(#00000588)

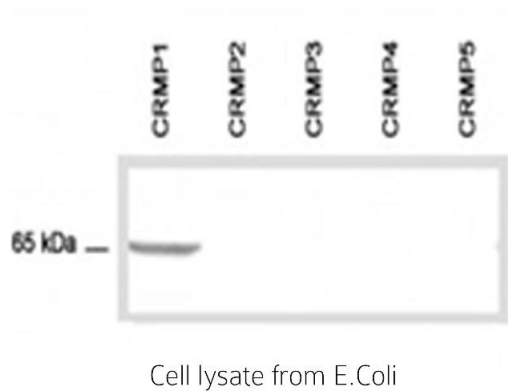


Image 2.