



Datasheet for ABIN346995

anti-Solute Carrier Family 17 (Vesicular Glutamate Transporter), Member 6 (SLC17A6) (C-Term) antibody



[Go to Product page](#)

3 Images

Overview

Quantity:	100 µL
Target:	Solute Carrier Family 17 (Vesicular Glutamate Transporter), Member 6 (SLC17A6)
Binding Specificity:	C-Term
Reactivity:	Rat
Host:	Rabbit
Clonality:	Polyclonal
Conjugate:	Un-conjugated
Application:	Western Blotting (WB), Immunohistochemistry (IHC), ELISA, Immunoelectron Microscopy (IEM)

Product Details

Immunogen:	A 19 residue synthetic peptide derived from C-terminal domain of rat Vesicular Glutamate Transporter type 2 (MW: 55-60kD)
Isotype:	IgG
Specificity:	Reacts with rat and human 55-60 kD VGLUT2 protein
Cross-Reactivity (Details):	Not cross reacts with VGLUT1 and VGLUT3.
Purification:	Antiserum

Target Details

Target:	Solute Carrier Family 17 (Vesicular Glutamate Transporter), Member 6 (SLC17A6)
Alternative Name:	Vesicular Glutamate Transporter 2 (VGLUT2) (SLC17A6 Products)

Target Details

Background:	Belongs to the major facilitator superfamily. Sodium/anion cotransporter family. VGLUT subfamily.
UniProt:	Q9J112

Application Details

Application Notes:	Working dilution: Optimal dilution should be determined by the end user. The following are guidelines only : - EM : 1/2 000 - IHC : 1/5 000 - WB : 1/2 000
--------------------	--

Restrictions:	For Research Use only
---------------	-----------------------

Handling

Format:	Lyophilized
Reconstitution:	Must be reconstituted in distilled water.
Storage:	4 °C/-20 °C
Storage Comment:	Lyophilized powder stable for a minimum of 2 years at -20°C. Store reconstituted antibodies at +4°C. For extended periods store in aliquots at -20°C. Antibodies are guaranteed for 6 month from date of receipt.
Expiry Date:	24 months

Images

pab0049: Polyclonal antibody to vesicular glutamate transporter Type 2 (vGLUT2)

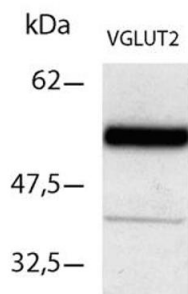
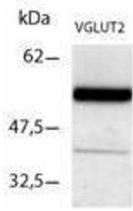


Image 1.

Application: IH, WB, IP, EM



Immunoblot analysis of an extract of total rat brain (5 μ g).

Image 2.

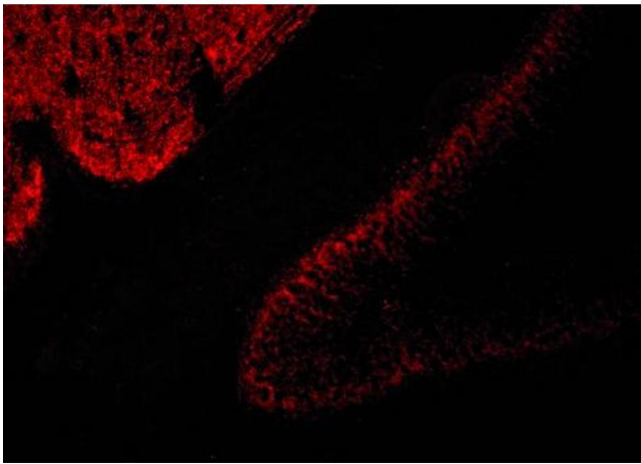


Image 3.