



Datasheet for ABIN347041  
**anti-DPYSL3 antibody (C-Term)**



[Go to Product page](#)

2 Images

5 Publications

### Overview

|                      |  |
|----------------------|--|
| Quantity:            | 100 µL   |
| Target:              | DPYSL3   |
| Binding Specificity: | C-Term   |
| Reactivity:          | Human  |
| Host:                | Rabbit   |
| Clonality:           | Polyclonal   |
| Conjugate:           | This DPYSL3 antibody is un-conjugated                    |
| Application:         | Western Blotting (WB), ELISA, Immunohistochemistry (IHC) |

### Product Details

|                             |   |
|-----------------------------|---|
| Immunogen:                  | A 15 residue synthetic peptide derived from C-terminal domain of human collapsing-response mediator |
| Isotype:                    | IgG   |
| Specificity:                | Reacts with 65 kDa CRMP-4 from human rat and mouse  |
| Cross-Reactivity (Details): | Do not react with CRMP-1, CRMP-2, CRMP-3 or CRMP-5.   |
| Purification:               | Antiserum   |

### Target Details

|                   |  |
|-------------------|--|
| Target:           | DPYSL3   |
| Alternative Name: | Collapsin Response Mediator Protein 4 (CRMP-4) ( <a href="#">DPYSL3 Products</a> ) |

## Target Details

---

|             |   |
|-------------|---|
| Background: | Necessary for signaling by class 3 semaphorins and subsequent remodeling of the cytoskeleton. Plays a role in axon guidance, neuronal growth cone collapse and cell migration |
| UniProt:    | <a href="#">Q14195</a>  |

## Application Details

---

|                    |   |
|--------------------|---|
| Application Notes: | Working dilution: Optimal dilution should be determined by the end user.<br>The following are guidelines only :<br>-IHC : 1/500 - WB :1/2 000 |
|--------------------|---|

|               |                       |
|---------------|-----------------------|
| Restrictions: | For Research Use only |
|---------------|-----------------------|

## Handling

---

|                  |   |
|------------------|---|
| Format:          | Lyophilized   |
| Reconstitution:  | Must be reconstituted in distilled water.   |
| Storage:         | 4 °C/-20 °C   |
| Storage Comment: | Lyophilized powder stable for a minimum of 2 years at -20°C. Store reconstituted antibodies at +4°C. For extended periods store in aliquots at -20°C. Antibodies are guaranteed for 6 month from date of receipt. |
| Expiry Date:     | 24 months   |

## Publications

---

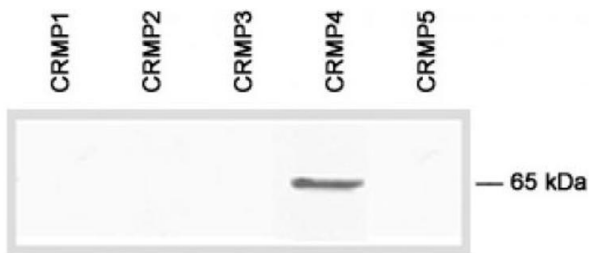
|                   |   |
|-------------------|---|
| Product cited in: | <p>Blasco, Bernard-Marissal, Vourch, Guettard, Sunyach, Augereau, Khederchah, Mouzat, Antar, Gordon, Veyrat-Durebex, Besson, Andersen, Salachas, Meininger, Camu, Pettmann, Andres, Corcia: "A rare motor neuron deleterious missense mutation in the DPYSL3 (CRMP4) gene is associated with ALS." in: <b>Human mutation</b>, Vol. 34, Issue 7, pp. 953-60, (2013) (<a href="#">PubMed</a>).</p> <p>Bretin, Reibel, Charrier, Maus-Moatti, Auvergnon, Thevenoux, Glowinski, Rogemond, Prémont, Honnorat, Gauchy: "Differential expression of CRMP1, CRMP2A, CRMP2B, and CRMP5 in axons or dendrites of distinct neurons in the mouse brain." in: <b>The Journal of comparative neurology</b>, Vol. 486, Issue 1, pp. 1-17, (2005) (<a href="#">PubMed</a>).</p> <p>Ricard, Rogemond, Charrier, Aguera, Bagnard, Belin, Thomasset, Honnorat: "Isolation and expression pattern of human Unc-33-like phosphoprotein 6/collapsin response mediator</p> |
|-------------------|---|

protein 5 (Ulip6/CRMP5): coexistence with Ulip2/CRMP2 in Sema3a- sensitive oligodendrocytes." in: **The Journal of neuroscience : the official journal of the Society for Neuroscience**, Vol. 21, Issue 18, pp. 7203-14, (2001) ([PubMed](#)).

Honorat, Byk, Kusters, Aguera, Ricard, Rogemond, Quach, Aunis, Sobel, Mattei, Kolattukudy, Belin, Antoine: "Ulip/CRMP proteins are recognized by autoantibodies in paraneoplastic neurological syndromes." in: **The European journal of neuroscience**, Vol. 11, Issue 12, pp. 4226-32, (2000) ([PubMed](#)).

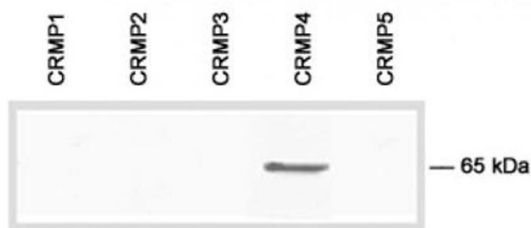
Balin, Loewy, Appelt: "Analysis of transglutaminase-catalyzed isopeptide bonds in paired helical filaments and neurofibrillary tangles from Alzheimer's disease." in: **Methods in enzymology**, Vol. 309, pp. 172-86, (1999) ([PubMed](#)).

Images



**Immunoblot analysis of the specificity of polyclonal antibody to CRMP4 (pab0117) using E.coli lysate transformed with cDNA of human CRMP4**

pab0117 : Collapsing-response mediator protein Type 4 (CRMP4)



**Immunoblot analysis of the specificity of polyclonal antibody to CRMP4 (pab0117) using E.coli lysate transformed with cDNA of human CRMP4**

Image 1.

Image 2.