

Datasheet for ABIN347399
anti-LY6G6F antibody (C-Term)[Go to Product page](#)

1 Image

Overview

Quantity:	100 µL
Target:	LY6G6F
Binding Specificity:	C-Term
Reactivity:	Human
Host:	Rabbit
Clonality:	Polyclonal
Conjugate:	This LY6G6F antibody is un-conjugated
Application:	Western Blotting (WB), ELISA, Immunohistochemistry (IHC)

Product Details

Immunogen:	Synthetic peptide derived from Cter domain of human LY6G6F protein
Isotype:	IgG
Specificity:	Reacts with human 32 kDa LY6G6F protein
Cross-Reactivity:	Rat (Rattus)
Cross-Reactivity (Details):	Cross react with proteins from rat and other species due to sequence homology.
Purification:	Antiserum

Target Details

Target:	LY6G6F
Alternative Name:	Lymphocyte Antigen 6 Complex Locus Protein G6f (LY6G6F Products)

Target Details

UniProt: [Q5SQ64](#)

Application Details

Application Notes: Working dilution: Optimal dilution should be determined by the end user.
The following are guidelines only :
- IHC : 1/50 to 1/500 - WB : 1/200 to 1/2 000

Restrictions: For Research Use only

Handling

Format: Lyophilized

Reconstitution: Must be reconstituted in distilled water.

Storage: 4 °C/-20 °C

Storage Comment: Lyophilized powder stable for a minimum of 2 years at -20°C. Store reconstituted antibodies at +4°C. For extended periods store in aliquots at -20°C. Antibodies are guaranteed for 6 month from date of receipt.

Expiry Date: 24 months

Images

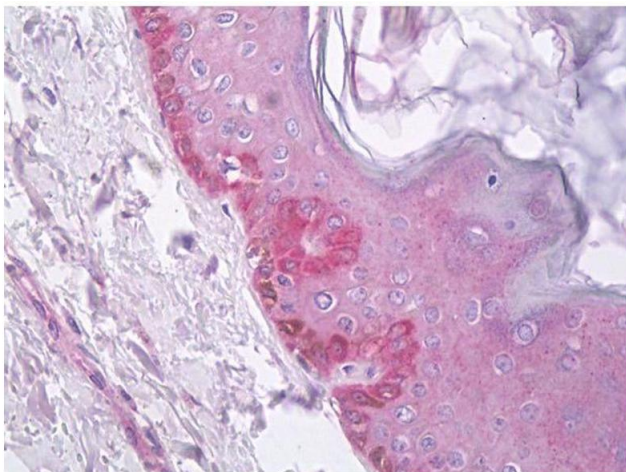


Image 1.