

Datasheet for ABIN347638  
**anti-MTDH antibody (N-Term)**



[Go to Product page](#)

1 Image

## Overview

Quantity:	200 µL
Target:	MTDH
Binding Specificity:	N-Term
Reactivity:	Human
Host:	Rabbit
Clonality:	Polyclonal
Conjugate:	This MTDH antibody is un-conjugated
Application:	Western Blotting (WB), Immunohistochemistry (IHC), ELISA

## Product Details

Immunogen:	Synthetic peptide derived from Nter domain of human LYRIC protein
Isotype:	IgG
Specificity:	Reacts with human 63 kDa protein LYRIC
Cross-Reactivity:	Mouse (Murine), Rat (Rattus)
Cross-Reactivity (Details):	Cross reacts with proteins from mouse, rat and other species due to sequence homology
Purification:	Antiserum

## Target Details

Target:	MTDH
Alternative Name:	Protein LYRIC ( <a href="#">MTDH Products</a> )

## Target Details

Pathways: [Cellular Response to Molecule of Bacterial Origin, Cell-Cell Junction Organization](#)

## Application Details

Application Notes: Working dilution: Optimal dilution should be determined by the end user.  
The following are guidelines only :  
- IHC : 1/50 to 1/200 - WB : 1/100 to 1/1 000

Restrictions: For Research Use only

## Handling

Format: Lyophilized

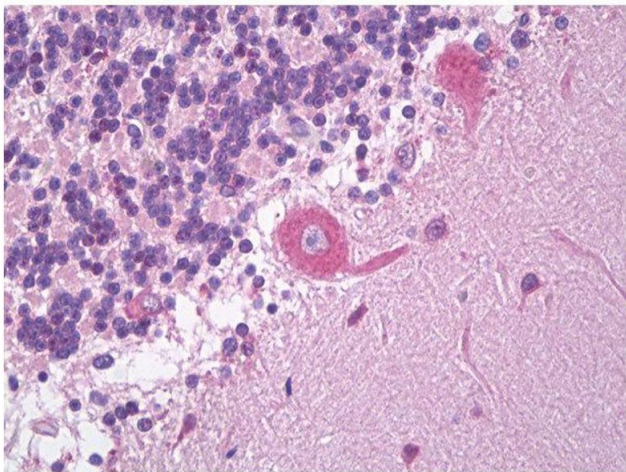
Reconstitution: Must be reconstituted in distilled water.

Storage: 4 °C/-20 °C

Storage Comment: Lyophilized powder stable for a minimum of 2 years at -20°C. Store reconstituted antibodies at +4°C. For extended periods store in aliquots at -20°C. Antibodies are guaranteed for 6 month from date of receipt.

Expiry Date: 24 months

## Images



**Image 1.**