



[Go to Product page](#)

Datasheet for ABIN349590

anti-Biotin antibody

2 Images

Overview

Quantity:	1 mg
Target:	Biotin
Reactivity:	Please inquire
Host:	Goat
Clonality:	Polyclonal
Conjugate:	This Biotin antibody is un-conjugated
Application:	ELISA

Product Details

Immunogen:	Biotin conjugated to Keyhole Limpet Hemocyanin (KLH)
Isotype:	IgG
Fragment:	Fab fragment
Characteristics:	Concentration Definition: by UV absorbance at 280 nm

Target Details

Target:	Biotin
Abstract:	Biotin Products
Target Type:	Chemical
Background:	Fab Biotin antibody recognizes a portion of the Fab of the protein. Biotin, also known as vitamin H or coenzyme R, is a water-soluble B-vitamin (vitamin B7). It is composed of a ureido

Target Details

(tetrahydroimidizalone) ring fused with a tetrahydrothiophene ring. A valeric acid substituent is attached to one of the carbon atoms of the tetrahydrothiophene ring. Biotin is a coenzyme for carboxylase enzymes, involved in the synthesis of fatty acids, isoleucine, and valine, and in gluconeogenesis.

Application Details

Application Notes: Fab Anti-Biotin Antibody is suitable for ELISA. Specific conditions for reactivity should be optimized by the end user.

Comment: ABS Reagent Type: Biotin

Restrictions: For Research Use only

Handling

Format: Liquid

Concentration: 2.0 mg/mL

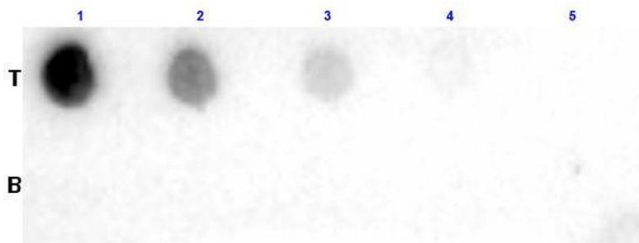
Buffer: 0.02 M Potassium Phosphate, 0.15 M Sodium Chloride, pH 7.2

Preservative: Sodium azide

Precaution of Use: This product contains sodium azide: a POISONOUS AND HAZARDOUS SUBSTANCE which should be handled by trained staff only.

Storage: 4 °C

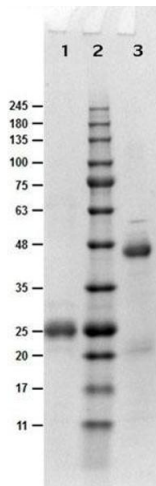
Images



Dot Blot

Image 1. Dot Blot results of Goat Fab Anti-Biotin Antibody.

Dots are top row (T) Biotin-BSA conjugated or bottom row (B) BSA alone: at (1) 100ng, (2) 33.3ng, (3) 11.1ng, (4) 3.70ng, (5) 1.23ng. Blocking: ABIN925618 for 30 min at RT. Primary Antibody: Goat Fab Anti-Biotin at 1µg/mL for 1hr at RT. Secondary Antibody: Donkey Anti-Goat HRP at 1:40,000 for 30min at RT.. Imaged with BioRad ChemiDoc, Chemi filter.



SDS-PAGE

Image 2. SDS-PAGE results of Goat Fab Anti-Biotin Antibody. Lane 1: reduced Goat Fab Anti-Biotin. Lane 2: Opal PreStained Molecular Weight Ladder . Lane 3: non-reduced Goat Fab Anti-Biotin. Load: 1 μ g. 4-20% Gel, Coomassie Blue Stained.