

Datasheet for ABIN349607

**anti-p130 antibody**[Go to Product page](#)**1** Image

## Overview

Quantity:	100 µg
Target:	p130 (RBL2)
Reactivity:	Human, Chimpanzee
Host:	Rabbit
Clonality:	Polyclonal
Conjugate:	This p130 antibody is un-conjugated
Application:	ELISA, Western Blotting (WB)

## Product Details

Immunogen:	<p>This affinity purified antibody was prepared by repeated immunizations with a synthetic peptide corresponding to the Spa310 sequence of pRb2/p130 protein. A residue of cysteine was added to facilitate coupling.</p> <p>Immunogen Type: Peptide</p>
Isotype:	IgG
Specificity:	<p>This antiserum is directed against Spa310 and reacts with the Spa3120 domain of pRb2/p130 from human tissues. Based on the sequence we expect this antibody to react as well Spa310 from chimpanzee and orangutan, and with lesser affinity, Spa310 from horse, dog, bovine, rat and opossum.</p>
Cross-Reactivity:	Chimpanzee
Characteristics:	<p>Spa310 is a 39 aa-long polypeptide encoded by a sequence which resides in the spacer region of the tumor suppressor Rb2 gene. Rb2 is a member of the retinoblastoma (Rb) gene family.</p>

## Product Details

Proteins in this family, which also include pRb/p105 and pRb/p107, are important cellular factors which play well-recognized roles as tumor and growth suppressors. Both p107 and pRb2/p130 share the ability to physically interact and inhibit the kinase activity of the Cdk2/Cyclin A and Cdk2/Cyclin E complexes, which play critical roles in cell cycle regulation. Spa310 is the region of the pRb2/p130 protein that is responsible for Cdk2/Cyclin E/A inhibition. Spa310 has also been shown to suppress cell growth as observed by colony formation, and to reduce volume of tumor growth in nude mice, likely through arrest in the G 0 /G 1 phase of the cell cycle. Understandably, the Spa310 small molecule represents a potentially significant pharmaceutical product in the treatment of hyperproliferative disorders.

Purification: affinity purified

Sterility: Sterile filtered

## Target Details

Target: p130 (RBL2)

Alternative Name: pRb2 p130 ([RBL2 Products](#))

Background: Spa310 is a 39 aa-long polypeptide encoded by a sequence which resides in the spacer region of the tumor suppressor Rb2 gene. Rb2 is a member of the retinoblastoma (Rb) gene family. Proteins in this family, which also include pRb/p105 and pRb/p107, are important cellular factors which play well-recognized roles as tumor and growth suppressors. Both p107 and pRb2/p130 share the ability to physically interact and inhibit the kinase activity of the Cdk2/Cyclin A and Cdk2/Cyclin E complexes, which play critical roles in cell cycle regulation. Spa310 is the region of the pRb2/p130 protein that is responsible for Cdk2/Cyclin E/A inhibition. Spa310 has also been shown to suppress cell growth as observed by colony formation, and to reduce volume of tumor growth in nude mice, likely through arrest in the G 0 /G 1 phase of the cell cycle. Understandably, the Spa310 small molecule represents a potentially significant pharmaceutical product in the treatment of hyperproliferative disorders. Synonyms: 130 kDa retinoblastoma associated protein antibody, RBR2 antibody, Retinoblastoma like 2 antibody, Retinoblastoma like protein 2 antibody, Retinoblastoma Related Gene antibody

Gene ID: 5934

UniProt: [Q08999](#)

Pathways: [Cell Division Cycle, Mitotic G1-G1/S Phases](#)

## Application Details

Application Notes:	This affinity purified antibody is suitable for ELISA and western blotting. Specific conditions for reactivity should be optimized by the end user. Expect a band approximately 130 kDa in size corresponding to pRb2/p130, and a band approximately 4.2kDa in size corresponding to Spa310 peptide (latter not shown), by western blotting in the appropriate cell lysate or extract.
--------------------	--

Comment:	Gene Name: RBL2
----------	-----------------

Restrictions:	For Research Use only
---------------	-----------------------

## Handling

Format:	Liquid
---------	--------

Concentration:	1.39 mg/mL
----------------	------------

Buffer:	0.02 M Potassium Phosphate, 0.15 M Sodium Chloride, pH 7.2
---------	--

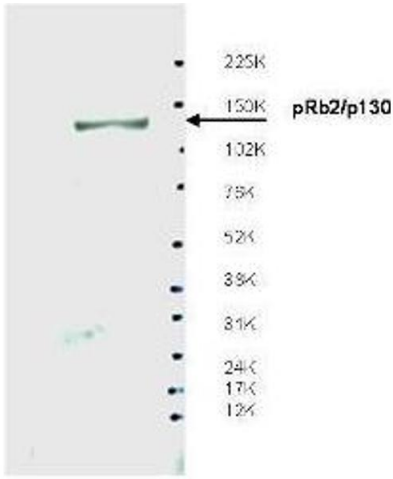
Preservative:	Sodium azide
---------------	--------------

Precaution of Use:	This product contains sodium azide: a POISONOUS AND HAZARDOUS SUBSTANCE which should be handled by trained staff only.
--------------------	--

Storage:	4 °C/-20 °C
----------	-------------

Storage Comment:	Store vial at 4 °C prior to restoration. For extended storage aliquot contents and freeze at -20 °C or below. Avoid cycles of freezing and thawing. Centrifuge product if not completely clear after standing at room temperature. This product is stable for several weeks at 4 °C as an undiluted liquid. Dilute only prior to immediate use. Expiration date is three (3) months from date of opening.
------------------	---

Expiry Date:	3 months
--------------	----------



Western Blotting

**Image 1.** Western blot using affinity purified anti-Spa310 antibody shows detection of endogenous pRb2/p130 protein in whole LNCaP cell extracts. The band at ~130 kDa, indicated by the arrowhead, corresponds to the expected molecular weight of pRb2/p130. The membrane was blocked overnight with a milk buffer at 4° C. Primary antibody was diluted 1:500 and reacted with the membrane overnight at 4° C. ECL was used for detection. Personal communication, Ang Sun, Sbarro Institute for Cancer Research and Molecular Medicine, Temple University, Philadelphia, PA.