

Datasheet for ABIN349618

**Donkey anti-Rabbit IgG (Fc Region) Antibody - Preadsorbed**[Go to Product page](#)**1** Image

## Overview

Quantity:	2 mg
Target:	IgG
Binding Specificity:	Fc Region
Reactivity:	Rabbit
Host:	Donkey
Clonality:	Polyclonal
Application:	ELISA, Immunohistochemistry (IHC), Western Blotting (WB)

## Product Details

Immunogen:	Immunogen: Rabbit IgG F(c) fragment
Isotype:	IgG
Specificity:	IgG F(c)
Characteristics:	Concentration Definition: by UV absorbance at 280 nm
Purification:	Preadsorption: immunoaffinity chromatography using Rabbit IgG coupled to agarose

## Target Details

Target:	IgG
Abstract:	<a href="#">IgG Products</a>
Target Type:	Antibody
Background:	Synonyms: Donkey Anti Rabbit IgG F(c) Antibody, Donkey Anti-Rabbit IgG Fc Fragment

## Target Details

---

Antibody, Donkey Anti Rabbit IgG Fc Antibody

Background: Anti-Rabbit IgG F(c) generated in donkey is a proteolytic fragment of immunoglobulin G (IgG) obtained by limited digestion with the enzyme papain under controlled conditions of temperature, time and pH . Receptors bind the Fc portion of rabbit IgG and often this fragment is removed from immunoglobulins to minimize receptor binding and lower background reactivity.

## Application Details

---

Application Notes: Immunohistochemistry Dilution: 1:1,000 - 1:5,000  
Application Note: Anti-Rabbit IgG F(c) antibody is suitable for ELISA, western blot, and immunohistochemistry, as well as other assays requiring lot-to-lot consistency.  
ELISA Dilution: 1:100,000  
Western Blot Dilution: 1:2,000 - 1:20,000

Restrictions: For Research Use only

## Handling

---

Format: Liquid

Concentration: 2 mg/mL

Buffer: 0.02 M Potassium Phosphate, 0.15 M Sodium Chloride, pH 7.2

Stabilizer: None

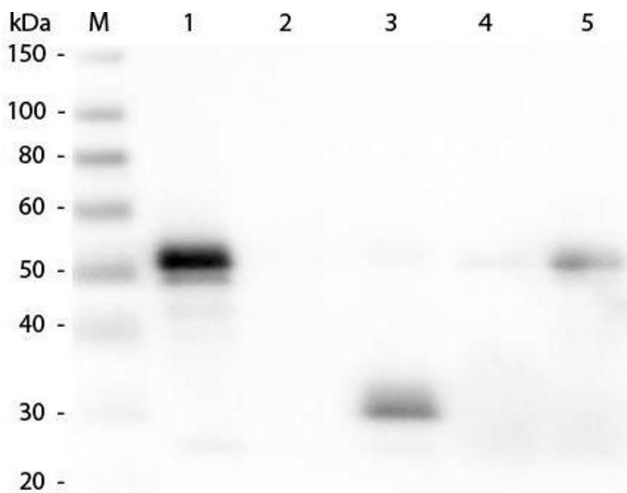
Preservative: 0.01 % (w/v) Sodium Azide

Preservative: Sodium azide

Precaution of Use: This product contains Sodium azide: a POISONOUS AND HAZARDOUS SUBSTANCE which should be handled by trained staff only.

Storage: 4 °C,-20 °C

Expiry Date: 12 months



### Western Blotting

**Image 1.** Western Blot of Anti-Rabbit IgG F(c) (DONKEY) Antibody . Lane M: 3  $\mu$ l Molecular Ladder. Lane 1: Rabbit IgG whole molecule . Lane 2: Rabbit IgG F(ab) Fragment . Lane 3: Rabbit IgG F(c) Fragment . Lane 4: Rabbit IgM Whole Molecule . Lane 5: Normal Rabbit Serum . All samples were reduced. Load: 50 ng per lane. Block: ABIN925618 for 30 min at RT. Primary Antibody: Anti-Rabbit IgG F(c) (DONKEY) Antibody 1:5,000 for 60 min at RT. Secondary antibody: Anti-Donkey IgG (GOAT) Peroxidase Conjugated Antibody 1:40,000 in ABIN925618 for 30 min at RT. Predicted/Obsevered Size: 25 and 50 kDa for Rabbit IgG and Serum, 25 kDa for F(c) and F(ab), 70 and 23 kDa for IgM. Rabbit F(c) migrates slightly higher.