

Datasheet for ABIN349707
anti-CD28 antibody (FITC)



[Go to Product page](#)

4 Images

4 Publications

Overview

Quantity:	100 tests
Target:	CD28
Reactivity:	Human, Non-Human Primate
Host:	Mouse
Clonality:	Monoclonal
Conjugate:	This CD28 antibody is conjugated to FITC
Application:	Flow Cytometry (FACS)

Product Details

Immunogen:	DC28.1.3.3 murine T cell hybridoma transfected with human CD28 cDNA
Clone:	CD28-2
Isotype:	IgG1 kappa
Specificity:	The mouse monoclonal antibody CD28.2 recognizes an extracellular epitope of CD28, a disulfide-linked homodimeric type I glycoprotein (monomer of Mw 44 kDa) which is a critical costimulatory receptor of T cells.
Cross-Reactivity (Details):	Human, Non-Human Primates
Purification:	Purified antibody is conjugated with fluorescein isothiocyanate (FITC) under optimum conditions and unconjugated antibody and free fluorochrome are removed by size-exclusion chromatography.

Target Details

Target:	CD28
Alternative Name:	CD28 (CD28 Products)
Background:	CD28 Molecule,CD28 is the critical T cell costimulatory receptor which provides to the cell the important second activation signal by binding CD80 and CD86 that are expressed by antigen presenting cells. Besides its costimulation role CD28 functions in preventing T cells from anergic hyporesponsive state or from undergoing premature apoptotic cell death. CD28 is also expressed on human fetal NK cells and some NK cell lines, whereas on murine NK cells the CD28 expression is much broader.,TP44
Gene ID:	940
UniProt:	P10747
Pathways:	TCR Signaling , Fc-epsilon Receptor Signaling Pathway , EGFR Signaling Pathway , Regulation of Leukocyte Mediated Immunity , Positive Regulation of Immune Effector Process , Production of Molecular Mediator of Immune Response

Application Details

Application Notes:	Flow cytometry: The reagent is designed for analysis of human blood cells using 20 µL reagent / 100 µL of whole blood or 10 ⁶ cells in a suspension. The content of a vial (2 ml) is sufficient for 100 tests.
Comment:	The purified antibody is conjugated with Fluorescein isothiocyanate (FITC) under optimum conditions. The reagent is free of unconjugated FITC and adjusted for direct use. No reconstitution is necessary.
Restrictions:	For Research Use only

Handling

Reconstitution:	No reconstitution is necessary.
Buffer:	Stabilizing phosphate buffered saline (PBS), pH 7.4, 15 mM sodium azide
Preservative:	Sodium azide
Precaution of Use:	This product contains Sodium azide: a POISONOUS AND HAZARDOUS SUBSTANCE which should be handled by trained staff only.
Handling Advice:	Do not freeze. Avoid prolonged exposure to light.

Handling

Storage:	4 °C
Storage Comment:	Store at 2-8°C. Protect from prolonged exposure to light. Do not freeze.

Publications

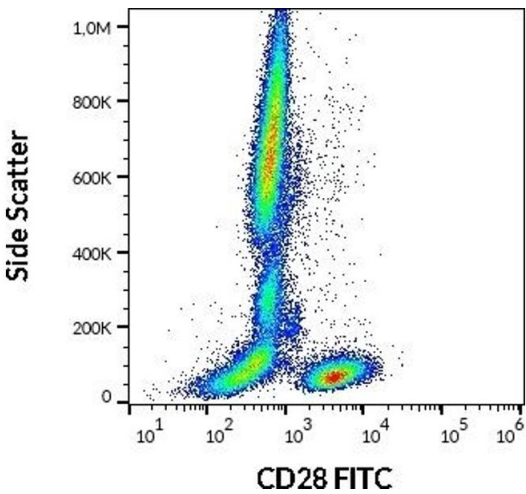
Product cited in: Jeong, Qiao, Nascimbeni, Hu, Rehmann, Murthy, Liang: "Immunization with hepatitis C virus-like particles induces humoral and cellular immune responses in nonhuman primates." in: **Journal of virology**, Vol. 78, Issue 13, pp. 6995-7003, (2004) ([PubMed](#)).

Scharschmidt, Wegener, Heissmeyer, Rao, Krappmann: "Degradation of Bcl10 induced by T-cell activation negatively regulates NF-kappa B signaling." in: **Molecular and cellular biology**, Vol. 24, Issue 9, pp. 3860-73, (2004) ([PubMed](#)).

Marti, Krause, Post, Lyddane, Dupont, Sadelain, King: "Negative-feedback regulation of CD28 costimulation by a novel mitogen-activated protein kinase phosphatase, MKP6." in: **Journal of immunology (Baltimore, Md. : 1950)**, Vol. 166, Issue 1, pp. 197-206, (2001) ([PubMed](#)).

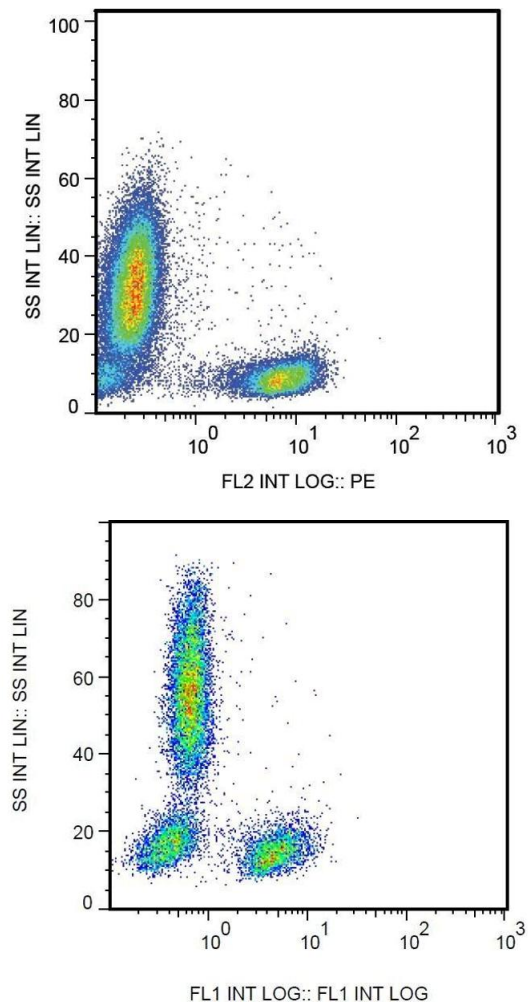
Galea-Lauri, Darling, Gan, Krivochchapov, Kuiper, Gäken, Souberbielle, Farzaneh: "Expression of a variant of CD28 on a subpopulation of human NK cells: implications for B7-mediated stimulation of NK cells." in: **Journal of immunology (Baltimore, Md. : 1950)**, Vol. 163, Issue 1, pp. 62-70, (1999) ([PubMed](#)).

Images



Flow Cytometry

Image 1. Flow cytometry surface staining pattern of human peripheral whole blood stained using anti-human CD28 (CD28.2) FITC antibody (20 µL reagent / 100 µL of peripheral whole blood).



Flow Cytometry

Image 2. Surface staining of human peripheral blood leukocytes with anti-human CD28 (CD28.2) purified.

Flow Cytometry

Image 3. Surface staining of human peripheral blood leukocytes with anti-human CD28 (CD28.2) FITC.

Please check the [product details page](#) for more images. Overall 4 images are available for ABIN349707.