



[Go to Product page](#)

Datasheet for ABIN349709

## Mouse anti-Human IgG (Fab Region) Antibody (PE)

### 2 Images

#### Overview

Quantity:	0.1 mg
Target:	IgG
Binding Specificity:	Fab Region
Reactivity:	Human
Host:	Mouse
Clonality:	Monoclonal
Conjugate:	PE
Application:	Flow Cytometry (FACS)

#### Product Details

Immunogen:	Purified human IgG.
Clone:	4A11
Isotype:	IgG2b
Specificity:	The mouse monoclonal antibody 4A11 reacts with Fab fragment of human IgG. This antibody detects Fab fragments regardless light chain type.
Cross-Reactivity (Details):	Human
Purification:	Purified antibody is conjugated with R-phycoerythrin (PE) under optimum conditions. Unconjugated antibody and free fluorochrome are removed by size-exclusion chromatography.

## Target Details

---

Target:	IgG
Abstract:	<a href="#">IgG Products</a>
Target Type:	Antibody
Background:	Immunoglobulin G (IgG) is a 150 kDa soluble protein that serves as a major effector molecule of the humoral immune response in man. Its concentration in blood plasma of healthy individuals is approximately 10 g/l, which accounts for about 75 % of the total plasma immunoglobulins. IgG has the highest stability of blood immunoglobulins (T1/2 = 21 days) and is able of placental transfer. IgG is secreted by plasma cells at a comparably high rate as other immunoglobulins.,Immunoglobulin G Fab fragment
Molecular Weight:	150 kDa

## Application Details

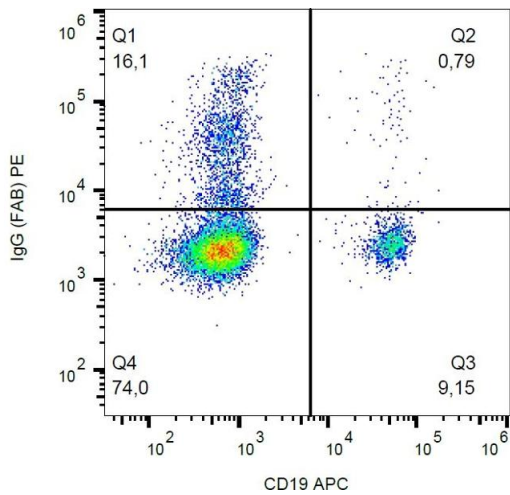
---

Application Notes:	Flow cytometry: Recommended dilution: 1-5 µg/mL.
Comment:	The purified antibody is conjugated with R-Phycoerythrin (PE) under optimum conditions. The conjugate is purified by size-exclusion chromatography and adjusted for direct use. No reconstitution is necessary.
Restrictions:	For Research Use only

## Handling

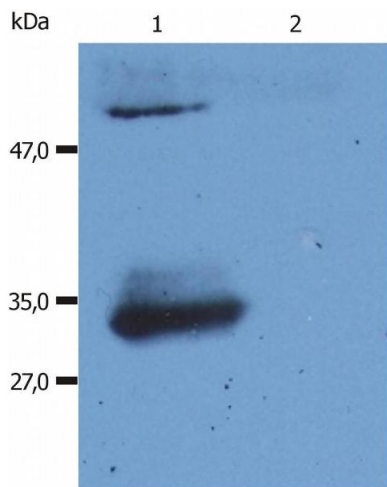
---

Format:	Liquid
Reconstitution:	No reconstitution is necessary.
Concentration:	0.1 mg/mL
Buffer:	Stabilizing phosphate buffered saline (PBS), pH 7.4, 15 mM sodium azide
Preservative:	Sodium azide
Precaution of Use:	This product contains Sodium azide: a POISONOUS AND HAZARDOUS SUBSTANCE which should be handled by trained staff only.
Handling Advice:	<b>Do not freeze.</b> Avoid prolonged exposure to light.
Storage:	4 °C
Storage Comment:	Store at 2-8°C. Protect from prolonged exposure to light. Do not freeze.



### Flow Cytometry

**Image 1.** Flow cytometry analysis (surface staining) of human peripheral blood cells with anti-human IgG Fab fragment (4A11) PE.



### Western Blotting

**Image 2.** Western Blotting analysis (reducing conditions) of human IgG Fab fragment using anti-human IgG Fab fragment (4A11). Lane 1: Normal human immunoglobulins  
Lane 2: Normal bovine immunoglobulins