

Datasheet for ABIN350180
anti-Cathelicidin antibody (AA 40-80)



[Go to Product page](#)

1 Image

Overview

Quantity:	500 µg
Target:	Cathelicidin (CAMP)
Binding Specificity:	AA 40-80
Reactivity:	Human
Host:	Rabbit
Clonality:	Polyclonal
Conjugate:	This Cathelicidin antibody is un-conjugated
Application:	Western Blotting (WB), Immunohistochemistry (IHC)

Product Details

Immunogen:	A synthetic peptide from aa region 40-80 of human CAP-18 conjugated to blue carrier protein has been used as the antigen.
Isotype:	IgG
Specificity:	Specific for Cathelicidin antimicrobial peptide.

Target Details

Target:	Cathelicidin (CAMP)
Alternative Name:	CAP-18 (CAMP Products)
Background:	Cathelicidin antimicrobial protein is an antimicrobial protein found in specific granules of polymorphonuclear leukocytes. Function: Binds to bacterial lipopolysaccharides (LPS), has antibacterial activity.

Target Details

Subcellular location: Secreted.

Tissue specificity: Expressed in bone marrow and testis and neutrophils. Also known as: CAMP, CAP18, FALL39, FALL-39, CAP-18, hCAP-18, CRAMP.

Pathways: [Cellular Response to Molecule of Bacterial Origin](#)

Application Details

Application Notes: Use at a concentration of 10-50 µg/ml.
The optimal concentration should be determined by the end user.
Not yet tested in other applications.

Restrictions: For Research Use only

Handling

Format: Lyophilized

Reconstitution: Reconstitute in 500 µL of sterile water. Centrifuge to remove any insoluble material.

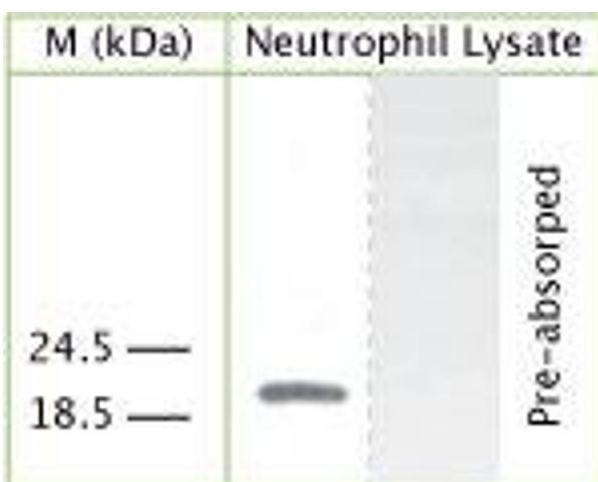
Handling Advice: Avoid freeze and thaw cycles.

Storage: 4 °C/-20 °C

Storage Comment: Maintain the lyophilised/reconstituted antibodies frozen at -20°C for long term storage and refrigerated at 2-8°C for a shorter term. When reconstituting, glycerol (1:1) may be added for an additional stability. Avoid freeze and thaw cycles.

Expiry Date: 12 months

Images



Western Blotting

Image 1. WB on human neutrophil lysate using Rabbit antibody to internal part of human Cathelicidin antimicrobial peptide (CAP-18): IgG (ABIN350180) at 50 µg/ml concentration. Pre-absorption of the antibody with the immunising peptide completely abolishes the detected band.