

Datasheet for ABIN350476
anti-MAP2 antibody (AA 350-400)

6 Images

[Go to Product page](#)

Overview

Quantity:	500 µg
Target:	MAP2
Binding Specificity:	AA 350-400
Reactivity:	Mouse
Host:	Rabbit
Clonality:	Polyclonal
Conjugate:	This MAP2 antibody is un-conjugated
Application:	Western Blotting (WB), Immunohistochemistry (IHC)

Product Details

Immunogen:	A synthetic peptide from AA 350-400 of mouse MAP2 conjugated to blue carrier protein was used as the antigen. The peptide is homologous in rat.
Isotype:	IgG
Specificity:	Specific for MAP-2.
Cross-Reactivity:	Mouse, Rat
Cross-Reactivity (Details):	Other species not yet tested.
Purification:	IgG

Target Details

Target:	MAP2
---------	------

Target Details

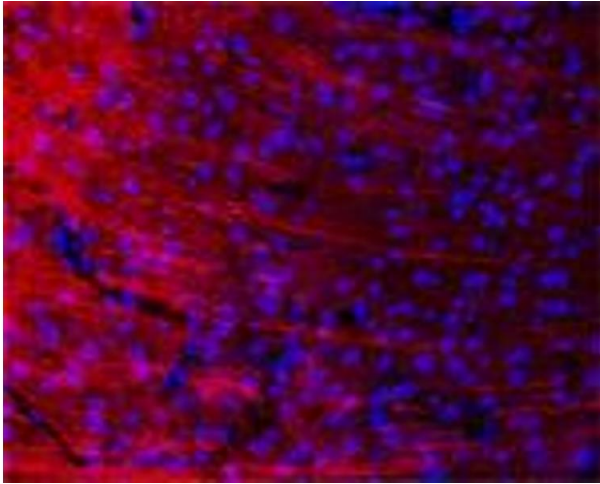
Alternative Name:	MAP2 (MAP2 Products)
Background:	Regulates and organizes microtubules, may serve as a scaffolding protein for neuromodulatory activities. FUNCTION: The exact function of MAP2 is unknown but MAPs may stabilize the microtubules against depolymerization. They also seem to have a stiffening effect on microtubules. SUBCELLULAR LOCATION: Cytoplasm, cytoskeleton. DEVELOPMENTAL STAGE: Isoform MAP2C is expressed during embryonic brain development and until postnatal day 10. Isoform MAP2B is expressed throughout brain development.,Cytoskeletal Proteins,Microtubule-associated protein 2, MAP 2, MAP-2, MAP2R
UniProt:	P15146

Application Details

Application Notes:	IHC, WB. A working concentration of 10-50 µg/ml is recommended. The optimal concentration should be determined by the end user. Not yet tested in other applications.
Restrictions:	For Research Use only

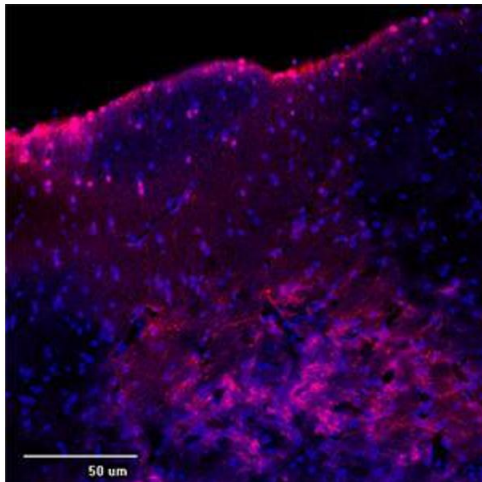
Handling

Format:	Lyophilized
Reconstitution:	Reconstitute in 500 µL of sterile water. Centrifuge to remove any insoluble material.
Handling Advice:	Avoid freeze and thaw cycles.
Storage:	4 °C/-20 °C
Storage Comment:	Maintain the lyophilised/reconstituted antibodies frozen at -20°C for long term storage and refrigerated at 2-8°C for a shorter term. When reconstituting, glycerol (1:1) may be added for an additional stability. Avoid freeze and thaw cycles.
Expiry Date:	12 months



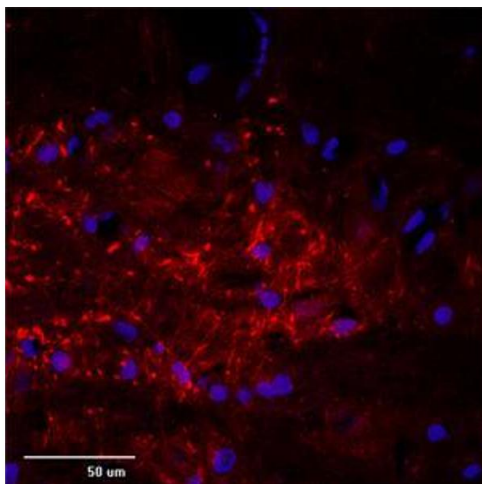
Immunofluorescence

Image 1. IF (confocal) on rat brain at a concentration of 30 µg/ml using Rabbit antibody to rat, mouse Mtap2 (Microtubule-associated protein 2, MAP-2, MAP 2, MAP2, MAP2R): IgG (ABIN350476), DAPI counterstained.



Immunofluorescence

Image 2. IF (confocal) on rat brain at a concentration of 30 µg/ml using Rabbit antibody to rat, mouse Mtap2 (Microtubule-associated protein 2, MAP-2, MAP 2, MAP2, MAP2R): IgG (ABIN350476), DAPI counterstained appearing in blue.



Immunofluorescence

Image 3. IF (confocal) on rat brain at a concentration of 30 µg/ml using Rabbit antibody to rat, mouse Mtap2 (Microtubule-associated protein 2, MAP-2, MAP 2, MAP2, MAP2R): IgG (ABIN350476), DAPI counterstained appearing in blue.

Please check the [product details page](#) for more images. Overall 6 images are available for ABIN350476.