

Datasheet for ABIN350664

anti-OMP antibody[Go to Product page](#)**1** Image

Overview

Quantity:	500 µg
Target:	OMP
Reactivity:	Rat
Host:	Rabbit
Clonality:	Polyclonal
Conjugate:	This OMP antibody is un-conjugated
Application:	Western Blotting (WB), Immunohistochemistry (IHC)

Product Details

Immunogen:	A synthetic peptide from rat Olfactory Marker Protein conjugated to blue carrier protein has been used as the antigen. The peptide is homologous in mouse.
Isotype:	IgG
Specificity:	Highly specific for mature olfactory neurons (including axon and terminals).
Cross-Reactivity:	Mouse, Rat
Cross-Reactivity (Details):	Other species have not yet been tested.
Purification:	IgG

Target Details

Target:	OMP
Alternative Name:	OMP (OMP Products)

Target Details

Background: Olfactory marker protein (OMP) is an abundant, 19- kDa, cytosolic protein that is almost exclusively expressed in mature, functioning, olfactory neurons but not in the neural precursor basal cells. The OMP gene structure and protein sequence are highly conserved between mouse, rat and human. Its tissue-specific expression in the receptor cells together with the results of the mouse knockout studies show that OMP represents a novel modulatory component of the odor detection/signal transduction cascade. **FUNCTION:** May act as a modulator of the olfactory signal-transduction cascade. **SUBUNIT:** Interacts with BEX1 and BEX2. **SUBCELLULAR LOCATION:** Cytoplasm. **TISSUE SPECIFICITY:** Uniquely associated with mature olfactory receptor neurons. **SIMILARITY:** Belongs to the olfactory marker protein family. <http://senselab.med.yale.edu/senselab/ordb/> <http://www.enzim.hu/hmmtop1.1/server/submit.html> > OMP, Olfactory neuronal-specific protein

UniProt: [P08523](#)

Application Details

Application Notes: IHC, WB. Use at a concentration of 5-10 µg/ml. The optimal dilution should be determined by the end user. For IHC, Zamboni's, 4 % PFA fixatives are recommended.

Restrictions: For Research Use only

Handling

Format: Lyophilized

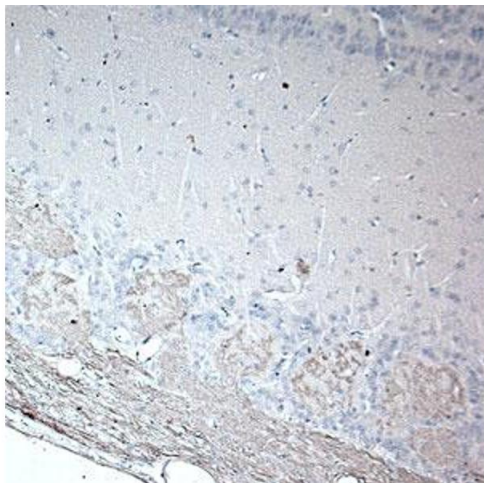
Reconstitution: Reconstitute in 500 µL of sterile water. Centrifuge to remove any insoluble material.

Handling Advice: Avoid freeze and thaw cycles.

Storage: 4 °C/-20 °C

Storage Comment: Maintain the lyophilised/reconstituted antibodies frozen at -20°C for long term storage and refrigerated at 2-8°C for a shorter term. When reconstituting, glycerol (1:1) may be added for an additional stability. Avoid freeze and thaw cycles.

Expiry Date: 12 months



Immunohistochemistry

Image 1. IHC on rat olfactory using Rabbit antibody to rat & mouse OMP (Olfactory Marker Protein): IgG at a concentration of 20 µg/ml in paraffin embedded section. Glomeruli are intensely stained. H&E counter stained.