

Datasheet for ABIN351037  
**anti-RHOA antibody (AA 100-150)**

## 6 Images

[Go to Product page](#)

## Overview

Quantity:	500 µg
Target:	RHOA
Binding Specificity:	AA 100-150
Reactivity:	Human
Host:	Rabbit
Clonality:	Polyclonal
Conjugate:	This RHOA antibody is un-conjugated
Application:	Western Blotting (WB), Immunohistochemistry (IHC)

## Product Details

Immunogen:	A synthetic peptide from AA 100-150 of human RhoA conjugated to blue carrier protein was used as the antigen. The peptide is homologous in many species including rat, mouse, chicken, dog, bovine, frog, zebrafish and orangutan.
Isotype:	IgG
Specificity:	Specific for RhoA.
Cross-Reactivity:	Human, Marmoset, Mouse, Rat
Cross-Reactivity (Details):	Other species not yet tested.
Purification:	IgG

## Target Details

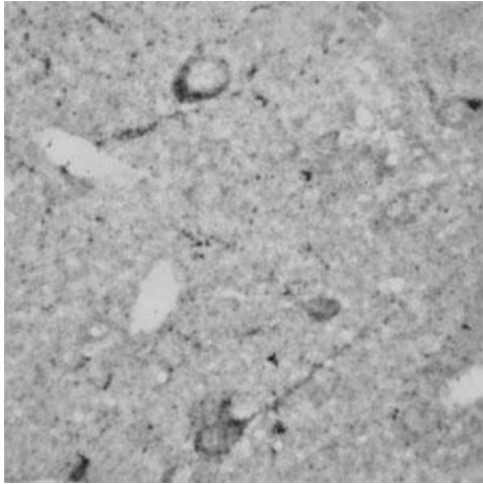
Target:	RHOA
Alternative Name:	RhoA ( <a href="#">RHOA Products</a> )
Background:	<p>FUNCTION: Regulates a signal transduction pathway linking plasma membrane receptors to the assembly of focal adhesions and actin stress fibers. May be an activator of PLCE1.</p> <p>SUBUNIT: Binds PRKCL1, ROCK1 and ROCK2. Interacts with ARHGEF3, NET1 and RTKN. Interacts with PLCE1 and AKAP13. Interacts with RGNEF. SUBCELLULAR LOCATION: Cell membrane, Lipid-anchor, Cytoplasmic side. Cytoplasm, cytoskeleton.,Rho Family,Arha, Arha2, ras homolog gene family member A, MGC72339</p>
UniProt:	<a href="#">P61586</a>
Pathways:	<a href="#">Microtubule Dynamics</a> , <a href="#">WNT Signaling</a> , <a href="#">Neurotrophin Signaling Pathway</a> , <a href="#">Intracellular Steroid Hormone Receptor Signaling Pathway</a> , <a href="#">Regulation of Intracellular Steroid Hormone Receptor Signaling</a> , <a href="#">Regulation of Actin Filament Polymerization</a> , <a href="#">Cell-Cell Junction Organization</a> , <a href="#">Positive Regulation of Endopeptidase Activity</a> , <a href="#">Signaling Events mediated by VEGFR1 and VEGFR2</a> , <a href="#">Thromboxane A2 Receptor Signaling</a> , <a href="#">SARS-CoV-2 Protein Interactome</a>

## Application Details

Application Notes:	IHC, WB. A concentration of 10-50 µg/ml is recommended. The optimal concentration should be determined by the end user.
Restrictions:	For Research Use only

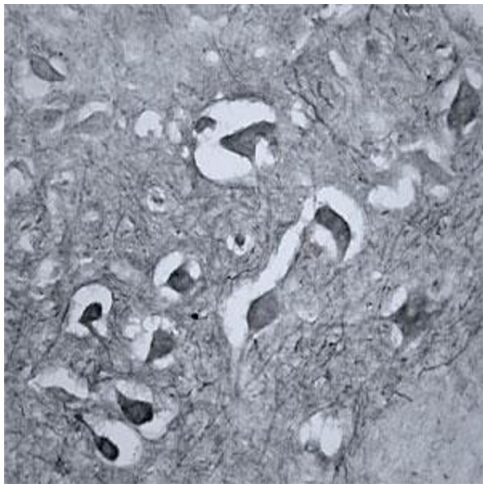
## Handling

Format:	Lyophilized
Reconstitution:	Reconstitute in 500 µL of sterile water. Centrifuge to remove any insoluble material.
Handling Advice:	Avoid freeze and thaw cycles.
Storage:	4 °C/-20 °C
Storage Comment:	Maintain the lyophilised/reconstituted antibodies frozen at -20°C for long term storage and refrigerated at 2-8°C for a shorter term. When reconstituting, glycerol (1:1) may be added for an additional stability. Avoid freeze and thaw cycles.
Expiry Date:	12 months



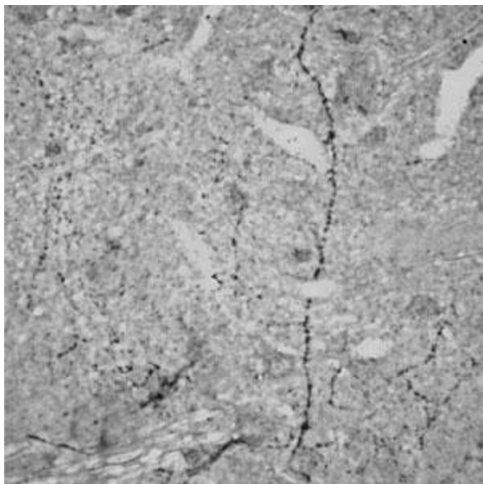
#### Immunohistochemistry

**Image 1.** IHC on rat brain (paraffin sections) using Rabbit antibody to RhoA at a concentration of 15 µg/ml, incubated overnight and developed with DAB Ni.



#### Immunohistochemistry

**Image 2.** IHC on mouse brain (cryo section) using Rabbit antibody to RhoA at a concentration of 15 µg/ml, incubated overnight and developed with DAB Ni.



#### Immunohistochemistry

**Image 3.** IHC on rat brain (paraffin sections) using Rabbit antibody to RhoA at a concentration of 15 µg/ml, incubated overnight and developed with DAB Ni.

Please check the [product details page](#) for more images. Overall 6 images are available for ABIN351037.