

Datasheet for ABIN351118  
**anti-TRPC1 antibody (Extracellular Loop)**[Go to Product page](#)

## 2 Images

## Overview

Quantity:	500 µg
Target:	TRPC1
Binding Specificity:	AA 500-540, Extracellular Loop
Reactivity:	Human, Mouse, Rat
Host:	Rabbit
Clonality:	Polyclonal
Conjugate:	This TRPC1 antibody is un-conjugated
Application:	Western Blotting (WB), Immunohistochemistry (IHC)

## Product Details

Immunogen:	A synthetic peptide from aa region 500-540 of the 2d extracellular loop of human TRPC1 conjugated to blue carrier protein was used as the antigen. The peptide is homologous in rat and mouse.
Isotype:	IgG
Specificity:	Specific for TRPC1.

## Target Details

Target:	TRPC1
Alternative Name:	TRPC1 ( <a href="#">TRPC1 Products</a> )
Background:	Function: Thought to form a receptor-activated non-selective calcium permeant cation channel. Probably is operated by a phosphatidylinositol second messenger system activated by receptor

## Target Details

tyrosine kinases or G-protein coupled receptors. Seems to be also activated by intracellular calcium store depletion.

Subunit: Interacts with TRPC3. Interacts with ITPR3.

Subcellular location: Membrane, Multi-pass membrane protein.

Tissue specificity: Seems to be ubiquitous. Also known as: Short transient receptor potential channel 1, TrpC1, TRP-1 protein, Trp1, Trrp1, Trpc1 transient receptor potential cation channel, subfamily C, member 1, Mtrp1, Trp-related protein 1.

## Application Details

Application Notes: A concentration of 10-50 µg/ml is recommended.  
The optimal concentration should be determined by the end user.  
Not yet tested in other applications.

Restrictions: For Research Use only

## Handling

Format: Lyophilized

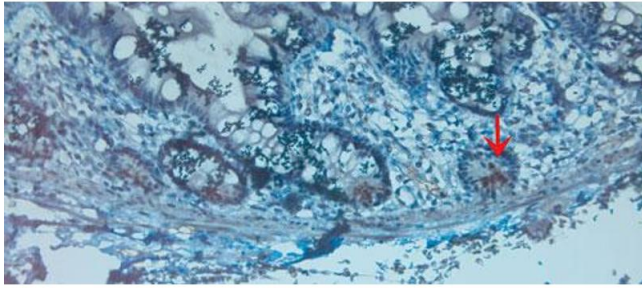
Reconstitution: Reconstitute in 100 µL of sterile water. Centrifuge to remove any insoluble material.

Handling Advice: Avoid freeze and thaw cycles.

Storage: 4 °C/-20 °C

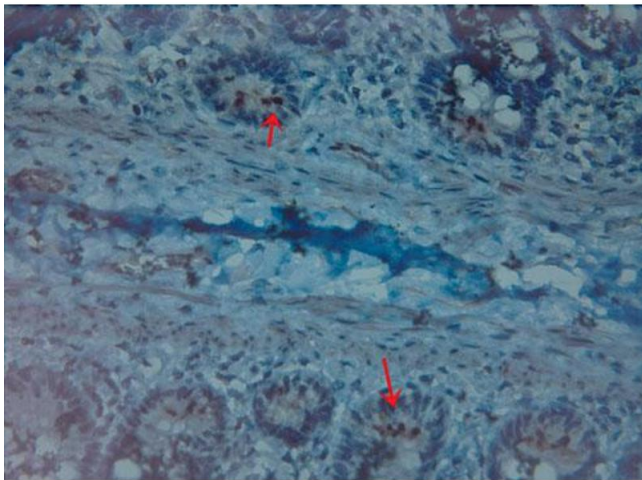
Storage Comment: Maintain the lyophilised/reconstituted antibodies frozen at -20°C for long term storage and refrigerated at 2-8°C for a shorter term. When reconstituting, glycerol (1:1) may be added for an additional stability. Avoid freeze and thaw cycles.

Expiry Date: 12 months



#### Immunohistochemistry

**Image 1.** IHC on paraffin sections of rat skin using Rabbit antibody to TRPC1 (500-540): . HIER: 1 mM EDTA, pH 8 for 20 min using Thermo's PT Module Detection was done using Novolink HRP polymer from Leica following manufacturer's instruction Primary antibody: dilution 1: 300, incubated 30 min at RT (using Autostainer) Sections were counterstained with Harris Hematoxylin.



#### Immunohistochemistry

**Image 2.** IHC on paraffin sections of rat skin using Rabbit antibody to TRPC1 (500-540): . HIER: 1 mM EDTA, pH 8 for 20 min using Thermo's PT Module Detection was done using Novolink HRP polymer from Leica following manufacturer's instruction Primary antibody: dilution 1: 300, incubated 30 min at RT (using Autostainer) Sections were counterstained with Harris Hematoxylin.