

Datasheet for ABIN351370
anti-SEC22B antibody (AA 2-50)[Go to Product page](#)

3 Images

Overview

Quantity:	500 µg
Target:	SEC22B
Binding Specificity:	AA 2-50
Reactivity:	Human
Host:	Rabbit
Clonality:	Polyclonal
Conjugate:	This SEC22B antibody is un-conjugated
Application:	Western Blotting (WB), Immunohistochemistry (IHC)

Product Details

Immunogen:	A synthetic peptide from AA 2-50 of human SEC22b conjugated to blue carrier protein was used as the antigen. The peptide is homologous in rat and mouse.
Isotype:	IgG
Specificity:	Specific for SEC22B.
Cross-Reactivity:	Human, Mouse, Rat
Cross-Reactivity (Details):	Other species not yet tested.
Purification:	IgG

Target Details

Target:	SEC22B
---------	--------

Target Details

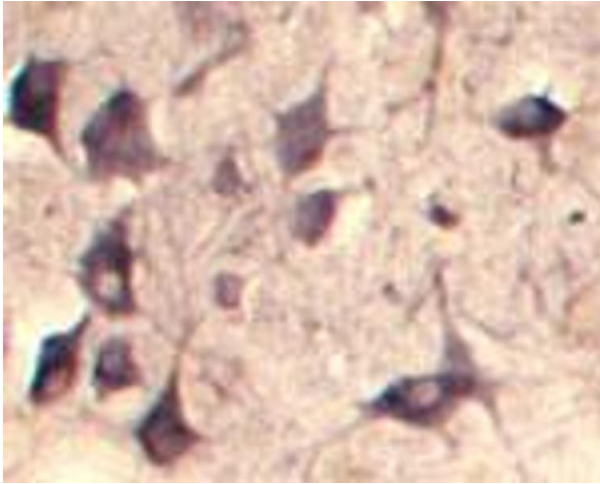
Alternative Name:	SEC22B (SEC22B Products)
Background:	FUNCTION: SNARE involved in targeting and fusion of ER-derived transport vesicles with the Golgi complex as well as Golgi-derived retrograde transport vesicles with the ER. SUBUNIT: Component of two distinct SNARE complexes consisting of STX5, GOSR2/BOS1, BET1 and SEC22B or STX18, USE1L, BNIP1/SEC20L and SEC22B. YKT6 can probably replace SEC22B in either complex. SUBCELLULAR LOCATION: Endoplasmic reticulum-Golgi intermediate compartment membrane, Single-pass type IV membrane protein. Golgi apparatus membrane, Single-pass type IV membrane protein. Melanosome.,Vesicle Transport,SEC22 vesicle-trafficking protein homolog B, SEC22 vesicle-trafficking protein-like 1, ERS24, ERS-24, Vesicle-trafficking protein SEC22b, SEC22L1
UniProt:	O75396

Application Details

Application Notes:	IHC, WB. A working concentration of 10-50 µg/ml is recommended. The optimal concentration should be determined by the end user.
Restrictions:	For Research Use only

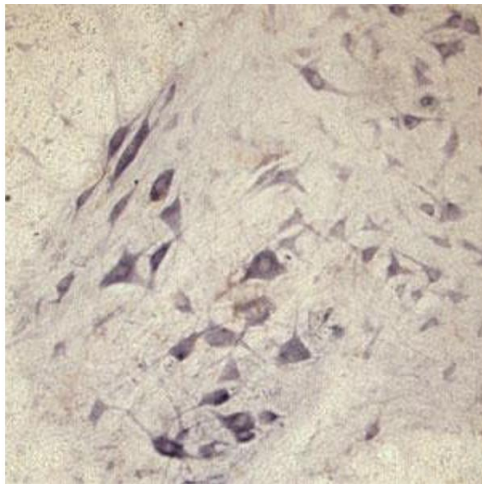
Handling

Format:	Lyophilized
Reconstitution:	Reconstitute in 500 µL of sterile water. Centrifuge to remove any insoluble material.
Handling Advice:	Avoid freeze and thaw cycles.
Storage:	4 °C/-20 °C
Storage Comment:	Maintain the lyophilised/reconstituted antibodies frozen at -20°C for long term storage and refrigerated at 2-8°C for a shorter term. When reconstituting, glycerol (1:1) may be added for an additional stability. Avoid freeze and thaw cycles.
Expiry Date:	12 months



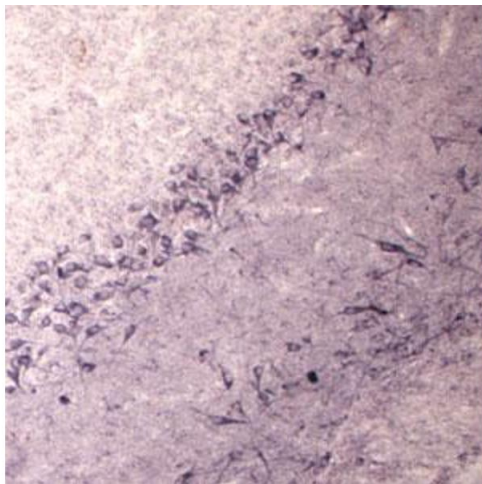
Immunohistochemistry

Image 1. IHC on rat spinal cord using Rabbit antibody to Vesicle-trafficking protein SEC22b (SEC22B, SEC22L1, ERS24): IgG (ABIN351370) at a concentration of 30 µg/ml. Pre-absorption of the antibody with the immunising peptide completely abolishes the immunostaining (not shown).



Immunohistochemistry

Image 2. IHC on rat spinal cord using Rabbit antibody to Vesicle-trafficking protein SEC22b (SEC22B, SEC22L1, ERS24): IgG (ABIN351370) at a concentration of 30 µg/ml. Pre-absorption of the antibody with the immunising peptide completely abolishes the immunostaining (not shown).



Immunohistochemistry

Image 3. IHC on rat brain using Rabbit antibody to Vesicle-trafficking protein SEC22b (SEC22B, SEC22L1, ERS24): IgG (ABIN351370) at a concentration of 30 µg/ml. Pre-absorption of the antibody with the immunising peptide completely abolishes the immunostaining (not shown).