

Datasheet for ABIN351379
anti-SLC17A7 antibody

4 Images

[Go to Product page](#)

Overview

Quantity:	500 µg
Target:	SLC17A7
Reactivity:	Rat
Host:	Rabbit
Clonality:	Polyclonal
Conjugate:	This SLC17A7 antibody is un-conjugated
Application:	Western Blotting (WB), Immunohistochemistry (IHC), Flow Cytometry (FACS)

Product Details

Immunogen:	A synthetic peptide from rat VGLUT1 conjugated to blue carrier protein was used as the antigen.
Isotype:	IgG
Specificity:	Specific for VGLUT1 (both isoforms 1 and 2).
Cross-Reactivity:	Human, Marmoset, Mouse, Rat
Cross-Reactivity (Details):	Other species not yet tested.
Purification:	IgG

Target Details

Target:	SLC17A7
Alternative Name:	VGLUT1 (SLC17A7 Products)
Background:	FUNCTION: Mediates the uptake of glutamate into synaptic vesicles at presynaptic nerve

Target Details

terminals of excitatory neural cells. May also mediate the transport of inorganic phosphate.
SUBCELLULAR LOCATION: Cytoplasmic vesicle, secretory vesicle, synaptic vesicle membrane.
Membrane, Multi-pass membrane protein. Cell junction, synapse, synaptosome.,SLC17
Family,Vesicular glutamate transporter 1, VGLUT1, Solute carrier family 17 member 7, Brain-specific Na(+)-dependent inorganic phosphate cotransporter, Bnpi

UniProt: [Q62634](#)

Application Details

Application Notes: IHC, WB, Flow Cyt. A concentration of 10-50 µg/ml is recommended. The optimal concentration should be determined by the end user. Not yet tested in other applications.

Restrictions: For Research Use only

Handling

Format: Lyophilized

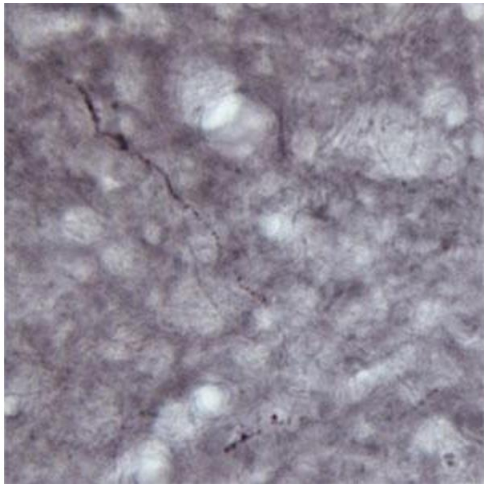
Reconstitution: Reconstitute in 500 µL of sterile water. Centrifuge to remove any insoluble material.

Handling Advice: Avoid freeze and thaw cycles.

Storage: 4 °C/-20 °C

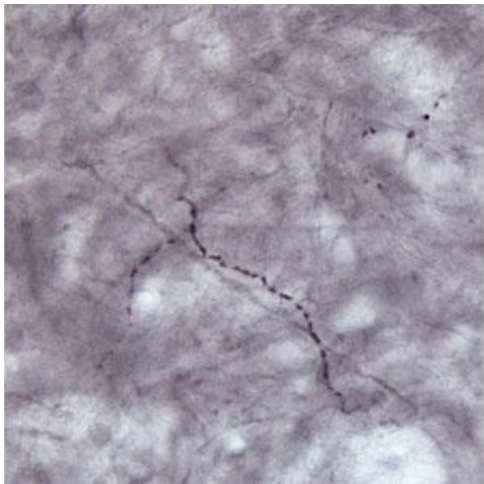
Storage Comment: Maintain the lyophilised/reconstituted antibodies frozen at -20°C for long term storage and refrigerated at 2-8°C for a shorter term. When reconstituting, glycerol (1:1) may be added for an additional stability. Avoid freeze and thaw cycles.

Expiry Date: 12 months



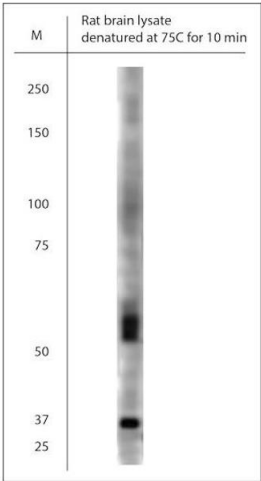
Immunohistochemistry

Image 1. IHC on rat brain (free floating sections) using Rabbit antibody to VGLUT1 at a concentration of 30 µg/ml.



Immunohistochemistry

Image 2. IHC on rat brain (free floating sections) using Rabbit antibody to VGLUT1 at a concentration of 30 µg/ml.



Western Blotting

Image 3. WB on rat brain lysate using Rabbit antibody to VGLUT1 at 1:300 dilution. Incubated 30 min at RT with shake. Blocking: 0.5% LFDM in 1x PBS containing 0.1% Tween-20

Please check the [product details page](#) for more images. Overall 4 images are available for ABIN351379.