

Datasheet for ABIN351385
anti-SLC17A8 antibody (C-Term)[Go to Product page](#)

1 Image

Overview

Quantity:	500 µg
Target:	SLC17A8
Binding Specificity:	C-Term
Reactivity:	Mouse
Host:	Rabbit
Clonality:	Polyclonal
Conjugate:	This SLC17A8 antibody is un-conjugated
Application:	Western Blotting (WB), Immunohistochemistry (IHC)

Product Details

Immunogen:	A synthetic peptide from the c-terminal region of mouse VGLUT3 conjugated to an immunogenic carrier protein was used as the antigen.
Isotype:	IgG
Specificity:	Specific for VGLUT3.

Target Details

Target:	SLC17A8
Alternative Name:	VGLuT3 (SLC17A8 Products)
Background:	Function: Mediates the uptake of glutamate into synaptic vesicles at presynaptic nerve terminals of excitatory neural cells. May also mediate the transport of inorganic phosphate. Subcellular location: Cytoplasmic vesicle › secretory vesicle › synaptic vesicle membrane.

Target Details

Membrane, Multi-pass membrane proteinPotential. Cell junction › synapse › synaptosome.

Tissue specificity: Expressed in brain, kidney and liver. Expressed within the amygdala, brainstem, cerberal cortex, dorsal root ganglia, dorsal spinal cord, hippocampus, hypothalamus, retina, striatum and ventral spinal cord. Expressed within neurons of the caudate-putamen,olfactory tubercle, nucleus accumbens, hippocampus, interpeduncular nucleus and dorsal and medial raphe nuclei. Expressed in inner hair cells of the ear. Expressed at synaptic terminals within the lateral superior olive (LSO), a nucleus of the mammalian sound localization system, and in the medial nucleus of the trapezoid body (MNTB), which provides inhibitory input to the LSO. Also known as: Vesicular glutamate transporter 3, Solute carrier family 17 member 8.

Pathways: [Sensory Perception of Sound](#), [Dicarboxylic Acid Transport](#)

Application Details

Application Notes: A concentration of 10-50 µg/ml is recommended.

The optimal concentration should be determined by the end user.

Not yet tested in other applications.

Restrictions: For Research Use only

Handling

Format: Lyophilized

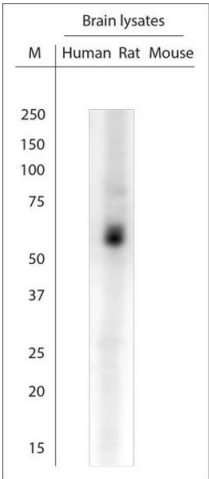
Reconstitution: Reconstitute in 100 µL of sterile water. Centrifuge to remove any insoluble material.

Handling Advice: Avoid freeze and thaw cycles.

Storage: 4 °C/-20 °C

Storage Comment: Maintain the lyophilised/reconstituted antibodies frozen at -20°C for long term storage and refrigerated at 2-8°C for a shorter term. When reconstituting, glycerol (1:1) may be added for an additional stability. Avoid freeze and thaw cycles.

Expiry Date: 12 months



Western Blotting

Image 1. WB on rat spinal cord. Lysate was prepared in RIPA using RP4 from OMNI. Blocking: 1xPBS containing 0.5% LFDM for 30 min at RT with shake at 70 RPM. Primary antibody dilution: 1:1000 incubated overnight at 4C. Detection: C-Digit from LiCore at high resolution.