



[Go to Product page](#)

Datasheet for ABIN351427

anti-Malectin antibody (N-Term)

3 Images

Overview

Quantity:	50 µg
Target:	Malectin (MLEC)
Binding Specificity:	N-Term
Reactivity:	Human, Pig, Rabbit, Cow, Dog, Horse, Mouse, Rat, Monkey, Bat
Host:	Rabbit
Clonality:	Polyclonal
Conjugate:	This Malectin antibody is un-conjugated
Application:	Immunohistochemistry (IHC), Immunohistochemistry (Paraffin-embedded Sections) (IHC (p))

Product Details

Brand:	IHC-plus™
Immunogen:	Synthetic 15 amino acid peptide from N-terminus of human MLEC. Percent identity with other species by BLAST analysis: Human, Gorilla, Gibbon, Monkey, Marmoset, Mouse, Rat, Bovine, Dog, Bat, Elephant, Panda, Horse, Rabbit, Pig, Pufferfish (100%), Chicken, Xenopus (87%), Stickleback, Tick (80%). Type of Immunogen: Synthetic peptide
Specificity:	Human MLEC. BLAST analysis of the peptide immunogen showed no homology with other human proteins.
Predicted Reactivity:	Percent identity with other species by BLAST analysis: Human, Gorilla, Gibbon, Monkey, Marmoset, Mouse, Rat, Bovine, Dog, Bat, Elephant, Panda, Horse, Rabbit, Pig, Pufferfish (100%)

Product Details

Chicken, Xenopus (87%) Stickleback, Tick (80%).

Purification: Immunoaffinity purified

Target Details

Target: Malectin (MLEC)

Alternative Name: KIAA0152 / MLEC ([MLEC Products](#))

Background: Name/Gene ID: MLEC

Synonyms: MLEC, KIAA0152, Malectin

Gene ID: 9761

Application Details

Application Notes: Approved: IHC, IHC-P (5 µg/mL)

Usage: Immunohistochemistry: This antibody was validated for use in immunohistochemistry on a panel of 21 formalin-fixed, paraffin-embedded (FFPE) human tissues after heat induced antigen retrieval in pH 6.0 citrate buffer. After incubation with the primary antibody, slides were incubated with biotinylated secondary antibody, followed by alkaline phosphatase-streptavidin and chromogen. The stained slides were evaluated by a pathologist to confirm staining specificity. The optimal working concentration for this antibody was determined to be 5 µg/mL.

Comment: Target Species of Antibody: Human

Restrictions: For Research Use only

Handling

Format: Liquid

Concentration: Lot specific

Buffer: PBS, less than 0.1 % sodium azide.

Preservative: Sodium azide

Precaution of Use: This product contains Sodium azide: a POISONOUS AND HAZARDOUS SUBSTANCE which should be handled by trained staff only.

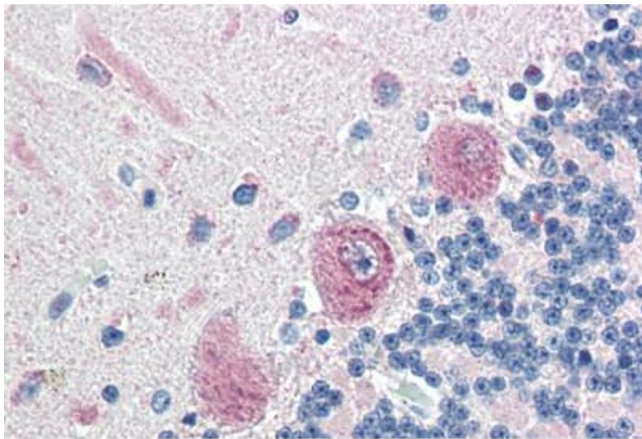
Storage: 4 °C,-20 °C

Handling

Storage Comment: Aliquot and store undiluted at -20°C or below for up to 1 year. Can be stored undiluted at 4°C for up to 1 month. Avoid freeze-thaw cycles.

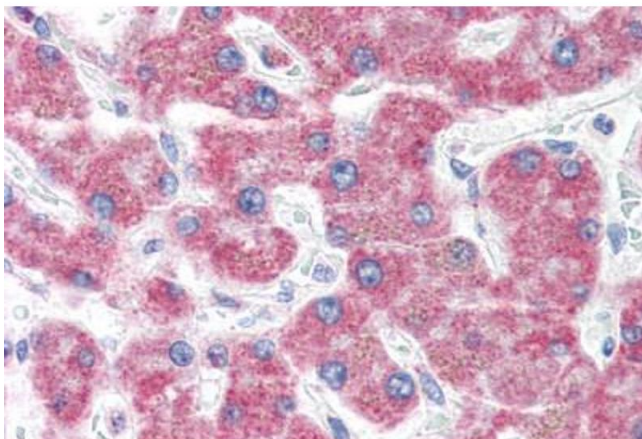
Expiry Date: 12 months

Images



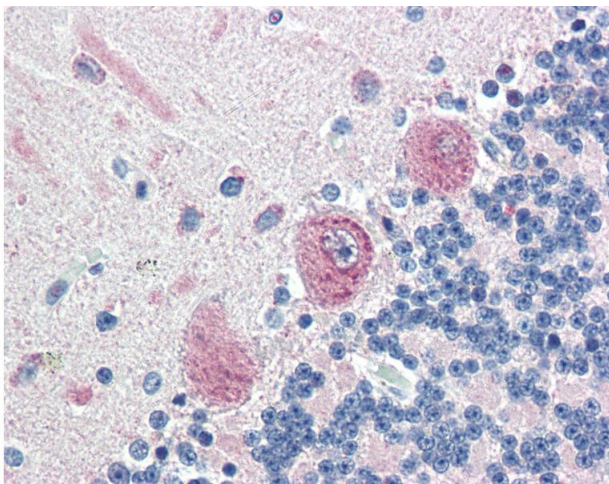
Immunohistochemistry (Paraffin-embedded Sections)

Image 1. Human Brain, Cerebellum (formalin-fixed, paraffin-embedded) stained with K1AA0152 antibody ABIN351427 at 5 ug/ml followed by biotinylated goat anti-rabbit IgG secondary antibody ABIN481713, alkaline phosphatase-streptavidin and chromogen.



Immunohistochemistry (Paraffin-embedded Sections)

Image 2. Human Liver (formalin-fixed, paraffin-embedded) stained with K1AA0152 antibody ABIN351427 at 5 ug/ml followed by biotinylated goat anti-rabbit IgG secondary antibody ABIN481713, alkaline phosphatase-streptavidin and chromogen.



Immunohistochemistry

Image 3. Anti-MLEC antibody IHC of human brain, cerebellum. Immunohistochemistry of formalin-fixed, paraffin-embedded tissue after heat-induced antigen retrieval.