

Datasheet for ABIN351428
anti-MFI2 antibody (N-Term)

3 Images

[Go to Product page](#)

Overview

Quantity:	50 µg
Target:	MFI2
Binding Specificity:	N-Term
Reactivity:	Human, Mouse, Rat, Horse, Monkey, Bat, Hamster
Host:	Rabbit
Clonality:	Polyclonal
Conjugate:	This MFI2 antibody is un-conjugated
Application:	Immunohistochemistry (IHC), Immunohistochemistry (Paraffin-embedded Sections) (IHC (p))

Product Details

Brand:	IHC-plus™
Immunogen:	Synthetic 15 amino acid peptide from N-terminus of human MFI2. Percent identity with other species by BLAST analysis: Human, Gorilla, Gibbon, Monkey, Marmoset, Mouse, Rat, Bat, Hamster, Elephant, Panda, Horse (100%), Bovine, Rabbit, Pig (93%), Chicken, Platypus (87%), Dog, Turkey, Medaka, Zebrafish (80%). Type of Immunogen: Synthetic peptide
Specificity:	Human MFI2. BLAST analysis of the peptide immunogen showed no homology with other human proteins.
Predicted Reactivity:	Percent identity with other species by BLAST analysis: Human, Gorilla, Gibbon, Monkey, Marmoset, Mouse, Rat, Bat, Hamster, Elephant, Panda, Horse (100%) Bovine, Rabbit, Pig (93%)

Product Details

Chicken, Platypus (87%) Dog, Turkey, Medaka, Zebrafish (80%).

Purification: Immunoaffinity purified

Target Details

Target: MFI2

Alternative Name: MFI2 / p97 / Melanotransferrin ([MFI2 Products](#))

Background: Name/Gene ID: MFI2

Synonyms: MFI2, Antigen p97, CD228, CD228 antigen, MAP97, Melanotransferrin, p97

Gene ID: 4241

Pathways: [Transition Metal Ion Homeostasis, Cell-Cell Junction Organization](#)

Application Details

Application Notes: Approved: IHC, IHC-P (15 µg/mL)

Usage: Immunohistochemistry: This antibody was validated for use in immunohistochemistry on a panel of 21 formalin-fixed, paraffin-embedded (FFPE) human tissues after heat induced antigen retrieval in pH 6.0 citrate buffer. After incubation with the primary antibody, slides were incubated with biotinylated secondary antibody, followed by alkaline phosphatase-streptavidin and chromogen. The stained slides were evaluated by a pathologist to confirm staining specificity. The optimal working concentration for this antibody was determined to be 15 µg/mL.

Comment: Target Species of Antibody: Human

Restrictions: For Research Use only

Handling

Format: Liquid

Concentration: Lot specific

Buffer: PBS, less than 0.1 % sodium azide.

Preservative: Sodium azide

Precaution of Use: This product contains Sodium azide: a POISONOUS AND HAZARDOUS SUBSTANCE which

Handling

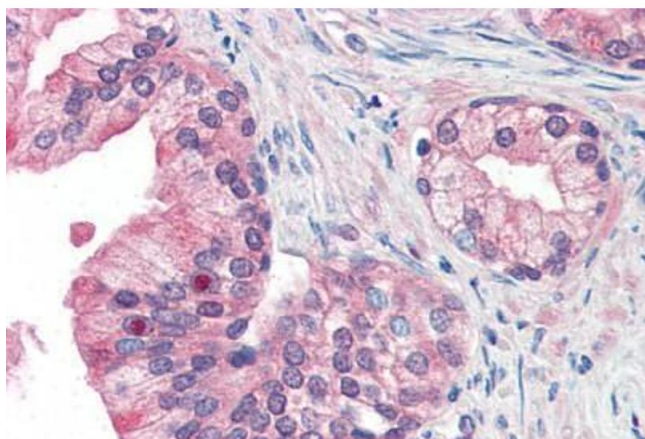
should be handled by trained staff only.

Storage: 4 °C, -20 °C

Storage Comment: Aliquot and store undiluted at -20°C or below for up to 1 year. Can be stored undiluted at 4°C for up to 1 month. Avoid freeze-thaw cycles.

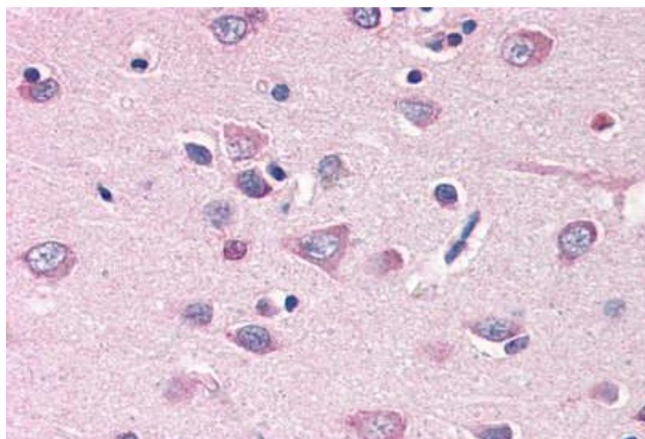
Expiry Date: 12 months

Images



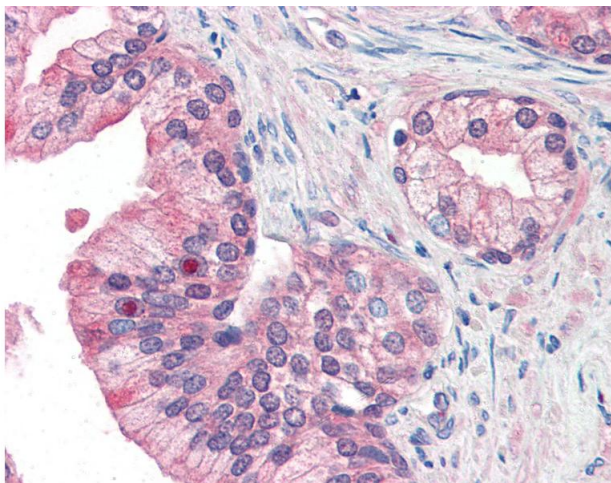
Immunohistochemistry (Paraffin-embedded Sections)

Image 1. Human Prostate (formalin-fixed, paraffin-embedded) stained with MFI2 antibody ABIN351428 at 15 ug/ml followed by biotinylated goat anti-rabbit IgG secondary antibody ABIN481713, alkaline phosphatase-streptavidin and chromogen.



Immunohistochemistry (Paraffin-embedded Sections)

Image 2. Human Brain, Cortex (formalin-fixed, paraffin-embedded) stained with MFI2 antibody ABIN351428 at 15 ug/ml followed by biotinylated goat anti-rabbit IgG secondary antibody ABIN481713, alkaline phosphatase-streptavidin and chromogen.



Immunohistochemistry

Image 3. Anti-MFI2 antibody IHC of human prostate. Immunohistochemistry of formalin-fixed, paraffin-embedded tissue after heat-induced antigen retrieval.