

Datasheet for ABIN351430
anti-OSTC antibody (Internal Region)

3 Images

[Go to Product page](#)

Overview

Quantity:	50 µg
Target:	OSTC
Binding Specificity:	Internal Region
Reactivity:	Mouse, Human, Rat, Chicken, Dog, Hamster, Pig, Xenopus laevis, Zebrafish (Danio rerio)
Host:	Rabbit
Clonality:	Polyclonal
Conjugate:	This OSTC antibody is un-conjugated
Application:	Immunohistochemistry (Paraffin-embedded Sections) (IHC (p)), Immunohistochemistry (IHC)

Product Details

Brand:	IHC-plus™
Immunogen:	Synthetic 14 amino acid peptide from internal region of human OSTC. Percent identity with other species by BLAST analysis: Human, Gorilla, Gibbon, Marmoset, Mouse, Rat, Dog, Hamster, Panda, Pig, Opossum, Chicken, Platypus, Xenopus, Pike, Catfish, Salmon, Sablefish, Pufferfish, Zebrafish, Stickleback (100%), Monkey, Bovine (93%), Elephant, Horse, Mosquito, Ant (86%). Type of Immunogen: Synthetic peptide
Specificity:	Human OSTC. BLAST analysis of the peptide immunogen showed no homology with other human proteins.
Predicted Reactivity:	Percent identity with other species by BLAST analysis: Human, Gorilla, Gibbon, Marmoset, Mouse, Rat, Dog, Hamster, Panda, Pig, Opossum, Chicken, Platypus, Xenopus, Pike, Catfish,

Product Details

Salmon, Sablefish, Pufferfish, Zebrafish, Stickleback (100%) Monkey, Bovine (93%) Elephant, Horse, Mosquito, Ant (86%).

Purification: Immunoaffinity purified

Target Details

Target: OSTC

Alternative Name: OSTC ([OSTC Products](#))

Background: Name/Gene ID: OSTC

Synonyms: OSTC, DC2, Hydrophobic protein HSF-28

Gene ID: 58505

Application Details

Application Notes: Approved: IHC, IHC-P (10 µg/mL)

Usage: Immunohistochemistry: This antibody was validated for use in immunohistochemistry on a panel of 21 formalin-fixed, paraffin-embedded (FFPE) human tissues after heat induced antigen retrieval in pH 6.0 citrate buffer. After incubation with the primary antibody, slides were incubated with biotinylated secondary antibody, followed by alkaline phosphatase-streptavidin and chromogen. The stained slides were evaluated by a pathologist to confirm staining specificity. The optimal working concentration for this antibody was determined to be 10 µg/mL.

Comment: Target Species of Antibody: Human

Restrictions: For Research Use only

Handling

Format: Liquid

Concentration: Lot specific

Buffer: PBS, less than 0.1 % sodium azide.

Preservative: Sodium azide

Precaution of Use: This product contains Sodium azide: a POISONOUS AND HAZARDOUS SUBSTANCE which

Handling

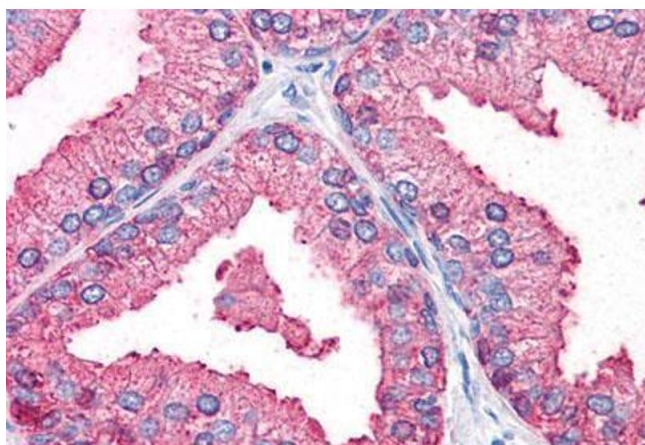
should be handled by trained staff only.

Storage: 4 °C, -20 °C

Storage Comment: Aliquot and store undiluted at -20°C or below for up to 1 year. Can be stored undiluted at 4°C for up to 1 month. Avoid freeze-thaw cycles.

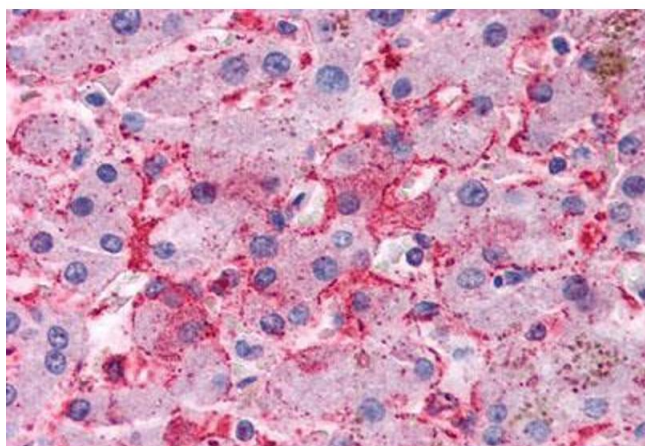
Expiry Date: 12 months

Images



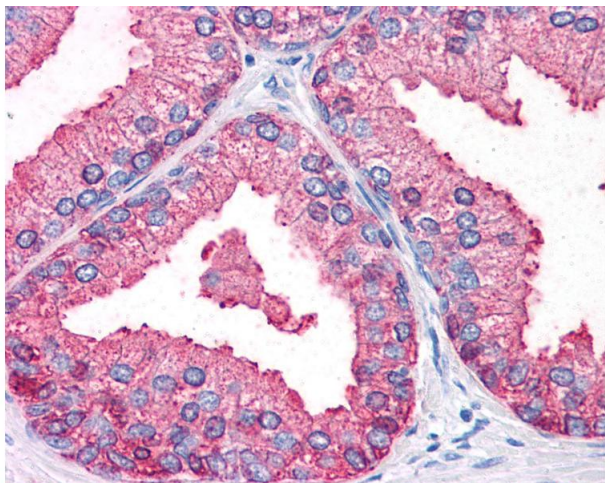
Immunohistochemistry (Paraffin-embedded Sections)

Image 1. Human Prostate (formalin-fixed, paraffin-embedded) stained with DC2 antibody ABIN351430 at 10 ug/ml followed by biotinylated goat anti-rabbit IgG secondary antibody ABIN481713, alkaline phosphatase-streptavidin and chromogen.



Immunohistochemistry (Paraffin-embedded Sections)

Image 2. Human Liver (formalin-fixed, paraffin-embedded) stained with DC2 antibody ABIN351430 at 10 ug/ml followed by biotinylated goat anti-rabbit IgG secondary antibody ABIN481713, alkaline phosphatase-streptavidin and chromogen.



Immunohistochemistry

Image 3. Anti-OSTC antibody IHC of human prostate. Immunohistochemistry of formalin-fixed, paraffin-embedded tissue after heat-induced antigen retrieval.