

Datasheet for ABIN351437  
**anti-PLIN3 antibody (N-Term)**[Go to Product page](#)

## 2 Images

## Overview

Quantity:	0.05 mg
Target:	PLIN3
Binding Specificity:	N-Term
Reactivity:	Human, Mouse, Rat
Host:	Rabbit
Clonality:	Polyclonal
Conjugate:	This PLIN3 antibody is un-conjugated
Application:	Western Blotting (WB), Immunohistochemistry (IHC), Immunohistochemistry (Paraffin-embedded Sections) (IHC (p))

## Product Details

Brand:	IHC-plus™
Isotype:	IgG
Purification:	Immunoaffinity purified

## Target Details

Target:	PLIN3
Alternative Name:	PLIN3 / M6PRBP1 / TIP47 ( <a href="#">PLIN3 Products</a> )
Background:	Name/Gene ID: PLIN3

Synonyms: PLIN3, 47 kDa MPR-binding protein, Cargo selection protein TIP47, Perilipin 3,

## Target Details

Placental protein 17, PP17, M6PRBP1, TIP47, Perilipin-3

Gene ID: 10226

## Application Details

Application Notes: Approved: IHC, IHC-P (5 µg/mL), WB

Usage: Immunohistochemistry: This antibody was validated for use in immunohistochemistry on a panel of 21 formalin-fixed, paraffin-embedded (FFPE) human tissues after heat induced antigen retrieval in pH 6.0 citrate buffer. After incubation with the primary antibody, slides were incubated with biotinylated secondary antibody, followed by alkaline phosphatase-streptavidin and chromogen. The stained slides were evaluated by a pathologist to confirm staining specificity. The optimal working concentration for this antibody was determined to be 5 µg/mL.

Comment: Target Species of Antibody: Human

Restrictions: For Research Use only

## Handling

Format: Liquid

Concentration: Lot specific

Buffer: PBS, 0.02 % sodium azide.

Preservative: Sodium azide

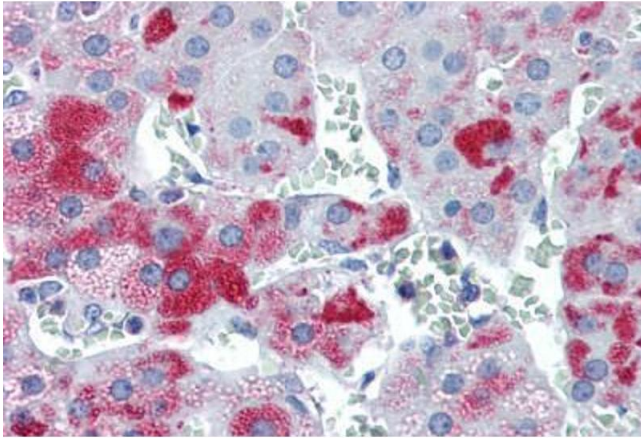
Precaution of Use: This product contains Sodium azide: a POISONOUS AND HAZARDOUS SUBSTANCE which should be handled by trained staff only.

Handling Advice: avoid freeze thaw cycles. Store undiluted.

Storage: 4 °C, -20 °C

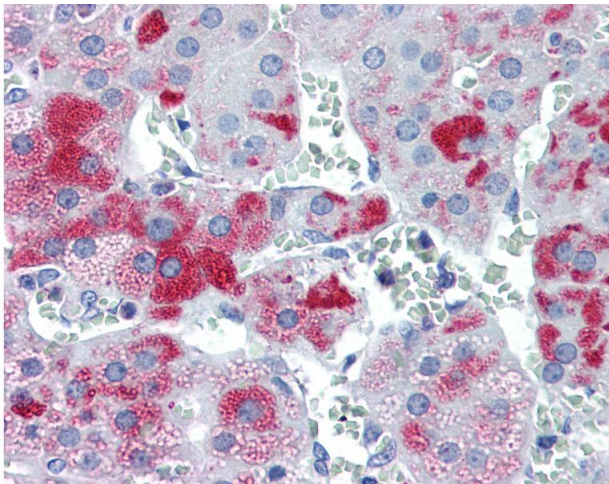
Storage Comment: Store at 4°C for 3 months and -20°C, stable for up to 1 year. Avoid repeated freeze-thaw cycles.

Expiry Date: 12 months



#### Immunohistochemistry (Paraffin-embedded Sections)

**Image 1.** Human Adrenal (formalin-fixed, paraffin-embedded) stained with M6PRBP1 antibody ABIN351437 at 5 ug/ml followed by biotinylated goat anti-rabbit IgG secondary antibody ABIN481713, alkaline phosphatase-streptavidin and chromogen.



#### Immunohistochemistry

**Image 2.** Anti-PLIN3 / M6PRBP1 antibody IHC of human adrenal. Immunohistochemistry of formalin-fixed, paraffin-embedded tissue after heat-induced antigen retrieval. Antibody concentration 5 ug/ml.