



Datasheet for ABIN351446
anti-ATG16L1 antibody (N-Term)



[Go to Product page](#)

3 Images

Overview

Quantity:	50 µg
Target:	ATG16L1
Binding Specificity:	N-Term
Reactivity:	Human, Mouse, Rat
Host:	Rabbit
Clonality:	Polyclonal
Conjugate:	This ATG16L1 antibody is un-conjugated
Application:	Western Blotting (WB), ELISA, Immunohistochemistry (IHC), Immunohistochemistry (Paraffin-embedded Sections) (IHC (p))

Product Details

Brand:	IHC-plus™
Isotype:	IgG
Purification:	Immunoaffinity purified

Target Details

Target:	ATG16L1
Alternative Name:	ATG16L1 / ATG16L (ATG16L1 Products)
Background:	Name/Gene ID: ATG16L1

Synonyms: ATG16L1, APG16-like 1, APG16L, APG16L beta, ATG16L, Autophagy-related protein

Target Details

16-1, IBD10, WD repeat domain 30, ATG16A, WDR30

Gene ID: 55054

UniProt: [Q676U5](#)

Pathways: [Autophagy](#)

Application Details

Application Notes: Approved: ELISA, IHC, IHC-P (5 µg/mL), WB (0.5 - 1 µg/mL)

Usage: Immunohistochemistry: This antibody was validated for use in immunohistochemistry on a panel of 21 formalin-fixed, paraffin-embedded (FFPE) human tissues after heat induced antigen retrieval in pH 6.0 citrate buffer. After incubation with the primary antibody, slides were incubated with biotinylated secondary antibody, followed by alkaline phosphatase-streptavidin and chromogen. The stained slides were evaluated by a pathologist to confirm staining specificity. The optimal working concentration for this antibody was determined to be 5 µg/mL.

Comment: Target Species of Antibody: Human

Restrictions: For Research Use only

Handling

Format: Liquid

Concentration: Lot specific

Buffer: PBS, 0.02 % sodium azide.

Preservative: Sodium azide

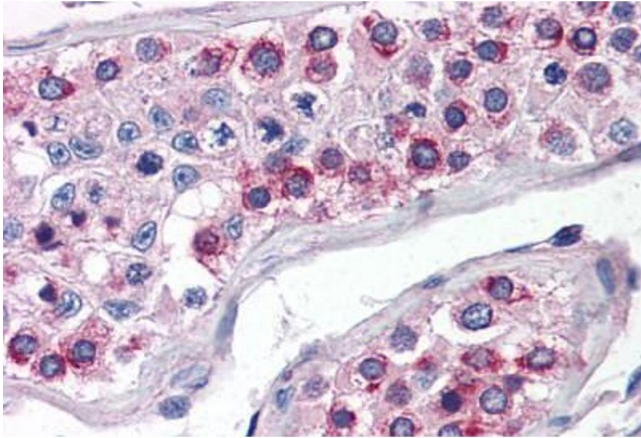
Precaution of Use: This product contains Sodium azide: a POISONOUS AND HAZARDOUS SUBSTANCE which should be handled by trained staff only.

Handling Advice: avoid freeze thaw cycles. Store undiluted.

Storage: 4 °C,-20 °C

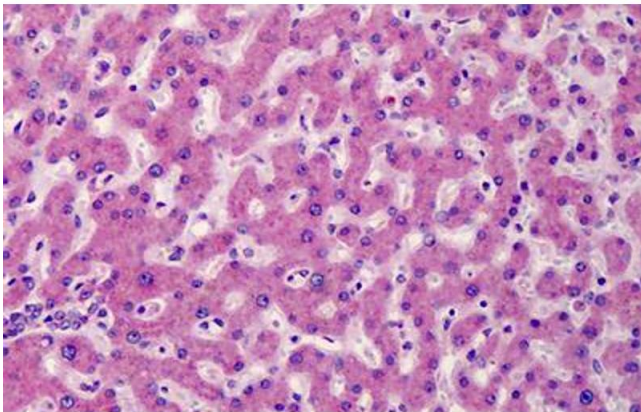
Storage Comment: Store at 4°C for 3 months and -20°C, stable for up to 1 year. Avoid repeated freeze-thaw cycles.

Expiry Date: 12 months



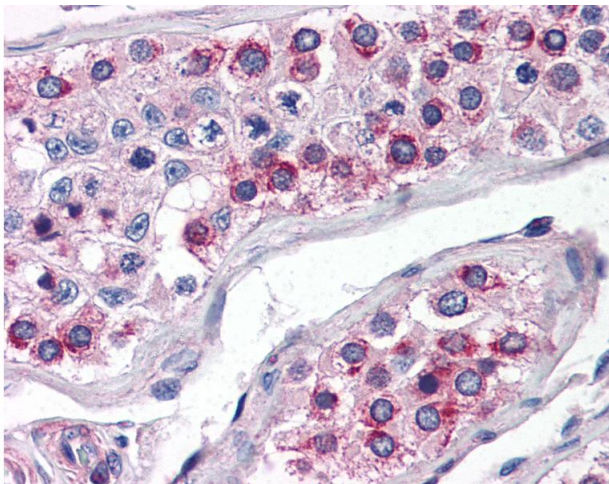
Immunohistochemistry (Paraffin-embedded Sections)

Image 1. Human Testis (formalin-fixed, paraffin-embedded) stained with ATG16L1 antibody ABIN351446 at 5 ug/ml followed by biotinylated goat anti-rabbit IgG secondary antibody ABIN481713, alkaline phosphatase-streptavidin and chromogen.



Immunohistochemistry (Formalin-fixed Paraffin-embedded Sections)

Image 2. Human Liver: Formalin-Fixed, Paraffin-Embedded (FFPE)



Immunohistochemistry

Image 3. Anti-ATG16L1 antibody IHC of human testis. Immunohistochemistry of formalin-fixed, paraffin-embedded tissue after heat-induced antigen retrieval. Antibody concentration 5 ug/ml.