

Datasheet for ABIN351494

anti-KLKB1 antibody

2 Images



[Go to Product page](#)

Overview

Quantity:	50 µg
Target:	KLKB1
Reactivity:	Human
Host:	Sheep
Clonality:	Polyclonal
Conjugate:	This KLKB1 antibody is un-conjugated
Application:	ELISA, Immunohistochemistry (IHC), Immunohistochemistry (Paraffin-embedded Sections) (IHC (p)), Immunoelectrophoresis (IEP)

Product Details

Brand:	IHC-plus™
Immunogen:	Human Prekallikrein (PK) purified from plasma. Type of Immunogen: Purified protein
Isotype:	IgG
Specificity:	Specific for PK as demonstrated by immunoelectrophoresis and ELISA.
Purification:	Ammonium sulfate precipitation

Target Details

Target:	KLKB1
Alternative Name:	KLKB1 / Plasma Kallikrein (KLKB1 Products)

Target Details

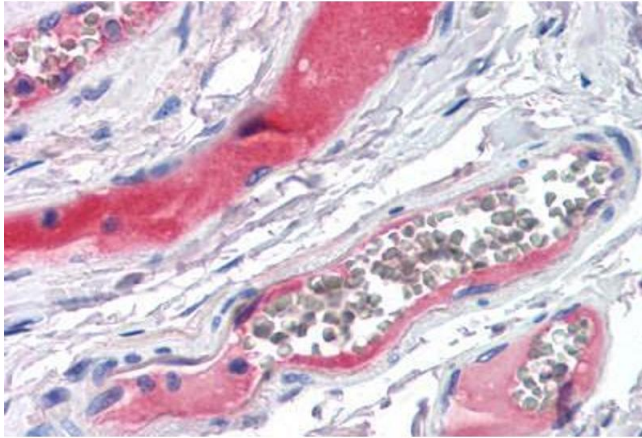
Background:	Name/Gene ID: KLKB1 Subfamily: Serine S1 Family: Protease Synonyms: KLKB1, Fletcher factor deficiency, Fletcher factor, Kininogenin, Plasma kallikrein, PKK deficiency, Plasma kallikrein heavy chain, PPK, Prekallikrein deficiency, Plasma kallikrein light chain, Plasma prekallikrein, Kallikrein 3
Gene ID:	3818
UniProt:	P03952
Pathways:	Complement System , Brown Fat Cell Differentiation

Application Details

Application Notes:	Approved: ELISA, IE, IHC, IHC-P (5 µg/mL) Usage: Immunohistochemistry: This antibody was validated for use in immunohistochemistry on a panel of 21 formalin-fixed, paraffin-embedded (FFPE) human tissues after heat induced antigen retrieval in pH 6.0 citrate buffer. After incubation with the primary antibody, slides were incubated with biotinylated secondary antibody, followed by alkaline phosphatase-streptavidin and chromogen. The stained slides were evaluated by a pathologist to confirm staining specificity. The optimal working concentration for this antibody was determined to be 5 µg/mL.
Comment:	Target Species of Antibody: Human
Restrictions:	For Research Use only

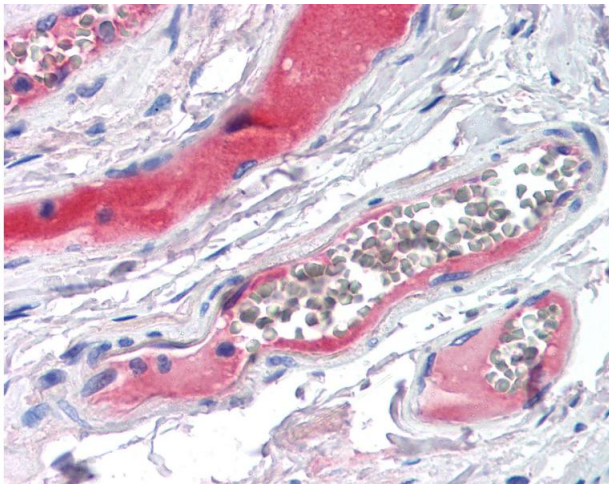
Handling

Format:	Liquid
Concentration:	Lot specific
Buffer:	10 mM HEPES, pH 7.4, 0.15 M sodium chloride, 50 % glycerol.
Handling Advice:	Avoid repeated freezing and thawing.
Storage:	4 °C, -20 °C
Storage Comment:	Short term: 4°C. Long term: Store at -20°C. Avoid freeze-thaw cycles.



Immunohistochemistry (Paraffin-embedded Sections)

Image 1. Human Small Intestine, Vessels (formalin-fixed, paraffin-embedded) stained with KLKB1 antibody ABIN351494 at 5 ug/ml followed by biotinylated secondary antibody, alkaline phosphatase-streptavidin and chromogen.



Immunohistochemistry

Image 2. Anti-KLKB1 antibody IHC of human small intestine, vessels. Immunohistochemistry of formalin-fixed, paraffin-embedded tissue after heat-induced antigen retrieval. Antibody concentration 5 ug/ml.