

Datasheet for ABIN351532

**anti-LRP1 antibody**

3 Images

[Go to Product page](#)

## Overview

Quantity:	50 µg
Target:	LRP1
Reactivity:	Human
Host:	Mouse
Clonality:	Monoclonal
Conjugate:	This LRP1 antibody is un-conjugated
Application:	Western Blotting (WB), Immunohistochemistry (IHC), ELISA, Flow Cytometry (FACS), Immunohistochemistry (Paraffin-embedded Sections) (IHC (p)), Immunohistochemistry (Frozen Sections) (IHC (fro))

## Product Details

Brand:	IHC-plus™
Immunogen:	Purified alpha2 macroglobulin receptor.  Type of Immunogen: Purified protein
Clone:	A2Mralpha-2
Isotype:	IgG1
Specificity:	Recognizes human CD91, a type I membrane protein which is also known as the alpha 2 macroglobulin receptor (alpha 2 MR). Recognizes an epitope in the extracellular region of the 500kD alpha chain.
Purification:	Protein G purified

## Target Details

Target:	LRP1
Alternative Name:	LRP1 / CD91 ( <a href="#">LRP1 Products</a> )
Background:	Name/Gene ID: LRP1  Synonyms: LRP1, Apolipoprotein E receptor, CD91 antigen, CD91, A2MR, IGFBP3R, Alpha-2-macroglobulin receptor, TGFBR5, Type V tgf-beta receptor, APOER, APR, LRP, LRP-1
Gene ID:	4035
UniProt:	<a href="#">Q07954</a>
Pathways:	<a href="#">Smooth Muscle Cell Migration</a> , <a href="#">Platelet-derived growth Factor Receptor Signaling</a>

## Application Details

Application Notes:	Approved: ELISA, Flo, IHC, IHC-Fr, IHC-P (10 µg/mL), WB  Usage: Immunohistochemistry: This antibody was validated for use in immunohistochemistry on a panel of 21 formalin-fixed, paraffin-embedded (FFPE) human tissues after heat induced antigen retrieval in pH 6.0 citrate buffer. After incubation with the primary antibody, slides were incubated with biotinylated secondary antibody, followed by alkaline phosphatase-streptavidin and chromogen. The stained slides were evaluated by a pathologist to confirm staining specificity. The optimal working concentration for this antibody was determined to be 10 µg/mL. ELISA: Direct. Western Blot: Non-reducing. Positive control: Liver. The applications listed have been tested for the unmodified form of this product. Other forms have not been tested.
Comment:	Target Species of Antibody: Human
Restrictions:	For Research Use only

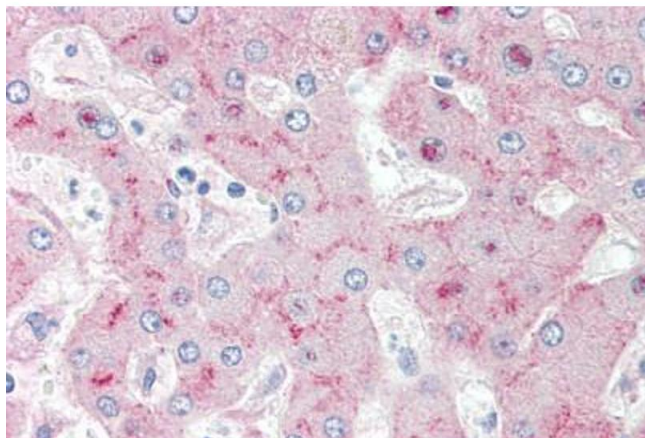
## Handling

Format:	Liquid
Concentration:	Lot specific
Buffer:	PBS, pH 7.4, 40 % glycerol. No preservatives added.
Preservative:	Azide free
Handling Advice:	Avoid repeated freezing and thawing.
Storage:	4 °C, -20 °C

## Handling

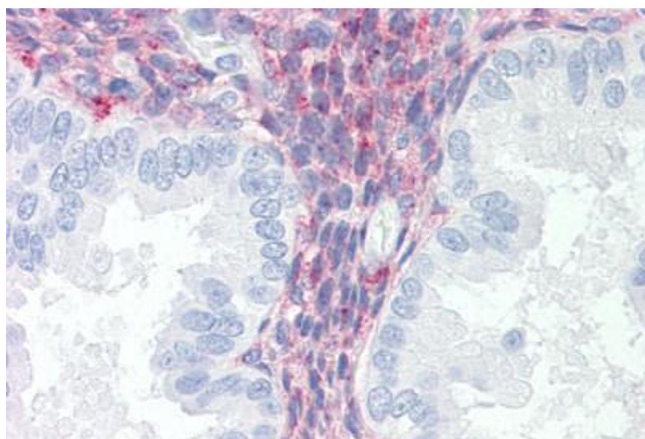
Storage Comment: 4°C or -20°C, Avoid freeze-thaw cycles.

## Images



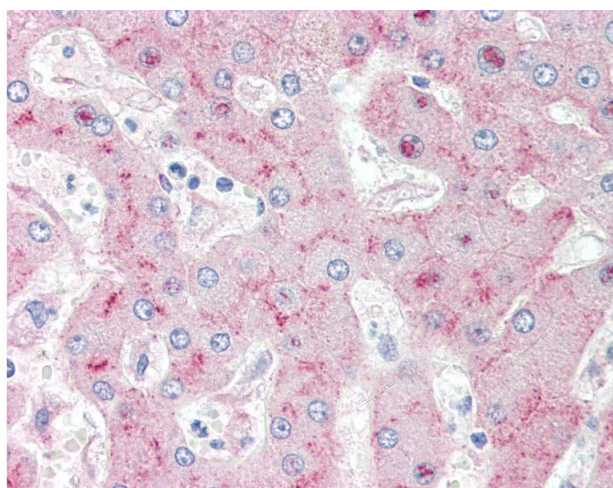
### Immunohistochemistry (Paraffin-embedded Sections)

**Image 1.** Human Liver (formalin-fixed, paraffin-embedded) stained with LRP1 antibody ABIN351532 at 10 ug/ml followed by biotinylated anti-mouse IgG secondary antibody ABIN481714, alkaline phosphatase-streptavidin and chromogen.



### Immunohistochemistry (Paraffin-embedded Sections)

**Image 2.** Human Uterus (formalin-fixed, paraffin-embedded) stained with LRP1 antibody ABIN351532 at 10 ug/ml followed by biotinylated anti-mouse IgG secondary antibody ABIN481714, alkaline phosphatase-streptavidin and chromogen.



### Immunohistochemistry

**Image 3.** Anti-LRP1 / Low Density LRP antibody IHC of human liver. Immunohistochemistry of formalin-fixed, paraffin-embedded tissue after heat-induced antigen retrieval. Antibody concentration 10 ug/ml. This image was taken for the unmodified form of this prod ...