

Datasheet for ABIN351533  
**anti-GRIA2 antibody (AA 175-430)**

## 3 Images

[Go to Product page](#)

## Overview

Quantity:	50 µg
Target:	GRIA2
Binding Specificity:	AA 175-430
Reactivity:	Human, Rat, Mouse, Monkey
Host:	Mouse
Clonality:	Monoclonal
Conjugate:	This GRIA2 antibody is un-conjugated
Application:	Western Blotting (WB), Immunohistochemistry (IHC), ELISA, Immunohistochemistry (Paraffin-embedded Sections) (IHC (p))

## Product Details

Brand:	IHC-plus™
Immunogen:	Fusion protein containing aa175-430 from the N-terminal region of GluR2.  Type of Immunogen: Fusion protein
Isotype:	IgG2a
Specificity:	Recognizes human GluR2 protein (~96kD). No cross-reactivity with other AMPA/Kainate GluR subunits. Species cross-reactivity: mouse, rat and monkey.
Purification:	Protein A purified

## Target Details

Target:	GRIA2
Alternative Name:	GRIA2 / GLUR2 ( <a href="#">GRIA2 Products</a> )
Background:	Name/Gene ID: GRIA2 Subfamily: Glutamate receptor - ionotropic (NMDA receptor) Family: Ion Channel  Synonyms: GRIA2, AMPA 2, GluR-K2, Glutamate receptor 2, HBGR2, GluA2, GluR-2, GluR-B, GLUR2, GLURB
Gene ID:	2891
UniProt:	<a href="#">P42262</a>
Pathways:	<a href="#">PI3K-Akt Signaling</a>

## Application Details

Application Notes:	Approved: ELISA (0.5 - 5 µg/mL), IHC, IHC-P (1:50), WB (1 - 5 µg/mL)  Usage: Immunohistochemistry: This antibody was validated for use in immunohistochemistry on a panel of 21 formalin-fixed, paraffin-embedded (FFPE) human tissues after heat induced antigen retrieval in pH 6.0 citrate buffer. After incubation with the primary antibody, slides were incubated with biotinylated secondary antibody, followed by alkaline phosphatase-streptavidin and chromogen. The stained slides were evaluated by a pathologist to confirm staining specificity. The optimal working concentration for this antibody was determined to be 1:50.
Comment:	Target Species of Antibody: Human
Restrictions:	For Research Use only

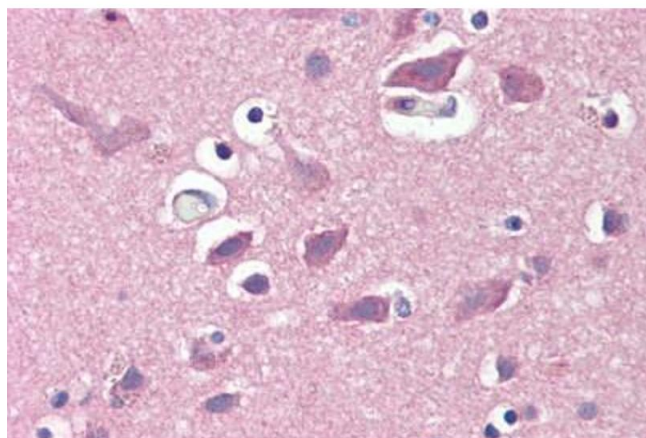
## Handling

Format:	Liquid
Concentration:	Lot specific
Buffer:	PBS, pH 7.4, 0.1 % sodium azide.
Preservative:	Sodium azide
Precaution of Use:	This product contains Sodium azide: a POISONOUS AND HAZARDOUS SUBSTANCE which should be handled by trained staff only.

## Handling

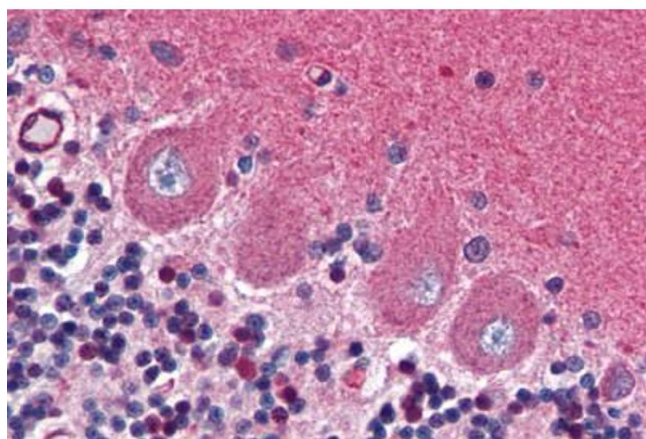
Handling Advice:	Avoid repeated freezing and thawing.
Storage:	4 °C, -20 °C
Storage Comment:	Short term: 4°C. Long term: Store at -20°C. Avoid freeze-thaw cycles.

## Images



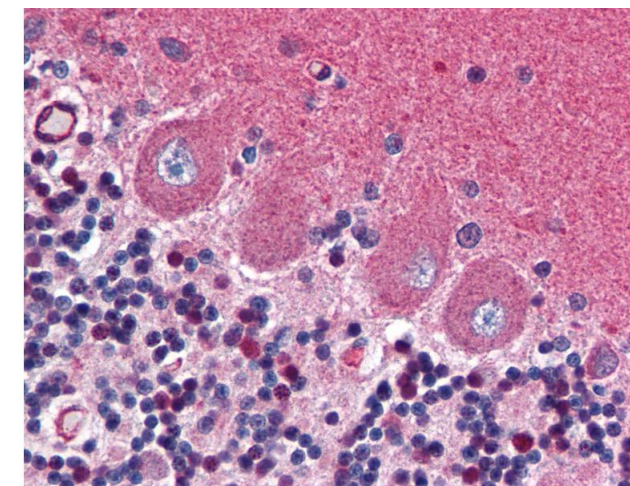
### Immunohistochemistry (Paraffin-embedded Sections)

**Image 1.** Human Brain, Cortex (formalin-fixed, paraffin-embedded) stained with GRIA2 antibody ABIN351533 at 1:50 followed by biotinylated anti-mouse IgG secondary antibody ABIN481714, alkaline phosphatase-streptavidin and chromogen.



### Immunohistochemistry (Paraffin-embedded Sections)

**Image 2.** Human Brain, Cerebellum (formalin-fixed, paraffin-embedded) stained with GRIA2 antibody ABIN351533 at 1:50 followed by biotinylated anti-mouse IgG secondary antibody ABIN481714, alkaline phosphatase-streptavidin and chromogen.



### Immunohistochemistry

**Image 3.** Anti-GRIA2 / GLUR2 antibody IHC of human brain, cerebellum. Immunohistochemistry of formalin-fixed, paraffin-embedded tissue after heat-induced antigen retrieval. Antibody dilution 1:50.