



[Go to Product page](#)

Datasheet for ABIN354403

## anti-PPP2R1A antibody (C-Term)

### 3 Images

#### Overview

Quantity:	100 µL
Target:	PPP2R1A
Binding Specificity:	C-Term
Reactivity:	Human, Mouse, Rat, Monkey, Drosophila melanogaster
Host:	Rabbit
Clonality:	Polyclonal
Conjugate:	This PPP2R1A antibody is un-conjugated
Application:	Western Blotting (WB), Immunofluorescence (IF), Flow Cytometry (FACS)

#### Product Details

Immunogen:	Synthetic peptide (KLH-coupled) corresponding to the carboxy terminus of human PP2A A subunit.  Type of Immunogen: Synthetic peptide
Specificity:	Recognizes endogenous levels of human Protein Phosphatase 2A, A Subunit, both a and b isoforms at ~62kD. Does not crossreact with other Protein Phosphatase 2A subunits.
Purification:	Protein A purified

#### Target Details

Target:	PPP2R1A
Alternative Name:	PPP2R1A ( <a href="#">PPP2R1A Products</a> )

## Target Details

---

Background: Name/Gene ID: PPP2R1A

Synonyms: PPP2R1A, PP2A-Aalpha, PP2AAALPHA, PR65A

Gene ID: 5518

UniProt: [P30153](#)

Pathways: [PI3K-Akt Signaling](#), [Mitotic G1-G1/S Phases](#), [M Phase](#), [Hepatitis C](#), [Toll-Like Receptors Cascades](#)

## Application Details

---

Application Notes: Approved: Flo (1:50), IF, WB (1:1000)

Usage: Western Blot: 1:1000, incubate membrane with diluted antibody in 5 % w/v BSA, 1X. TBS, 0.1 % Tween-20 at 4°C with gentle shaking, overnight. Immunofluorescence (IF-IC): 1:100. Flow Cytometry: 1:50.

Comment: Target Species of Antibody: Human

Restrictions: For Research Use only

## Handling

---

Format: Liquid

Concentration: Lot specific

Buffer: 10 mM sodium HEPES, pH 7.5, 150 mM sodium chloride, 100 µg/mL BSA, 50 % glycerol

Handling Advice: Avoid repeat freeze-thaw cycles.

Storage: 4 °C, -20 °C

Storage Comment: Short term: 4°C. Long term: Store at -20°C. Avoid freeze-thaw cycles.

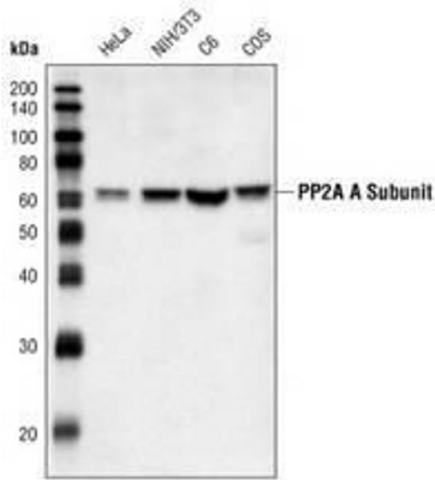


Image 1.

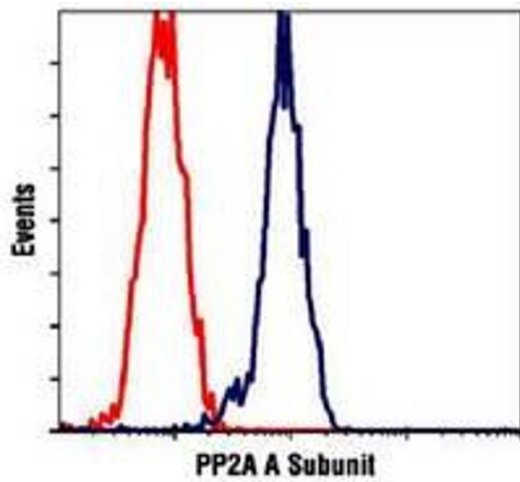


Image 2.

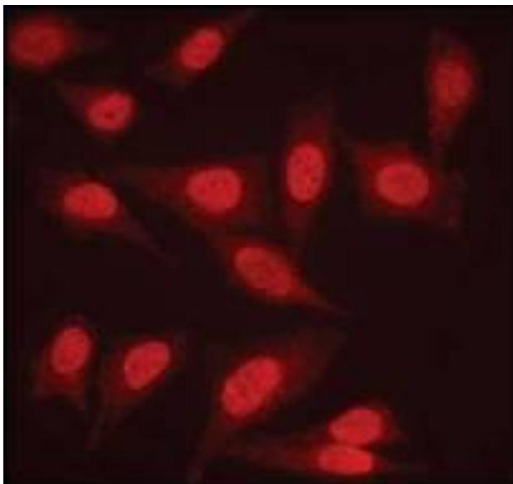


Image 3.