

Datasheet for ABIN356224
anti-CRABP2 antibody (N-Term)

3 Images

[Go to Product page](#)

Overview

Quantity:	0.1 mL
Target:	CRABP2
Binding Specificity:	AA 1-138, N-Term
Reactivity:	Human, Mouse
Host:	Mouse
Clonality:	Monoclonal
Conjugate:	This CRABP2 antibody is un-conjugated
Application:	Western Blotting (WB), Immunohistochemistry (Paraffin-embedded Sections) (IHC (p)), Enzyme Immunoassay (EIA)

Product Details

Immunogen:	Recombinant Human CRABP2 (1-138aa) purified from E. coli
Clone:	AT2E11
Isotype:	IgG2a
Specificity:	The antibody recognizes Human and Mouse CRABP2. Other species not tested.
Characteristics:	Synonyms: CRABP-II, Cellular retinoic acid-binding protein 2, Cellular retinoic acid-binding protein II
Purification:	Protein-G affinity chromatography

Target Details

Target:	CRABP2
Alternative Name:	CRABP2 (CRABP2 Products)
Background:	The cellular retinoic acid-binding protein II (CRABP-II) is involved in the conversion of vitamin A into its intracellular active form retinoic acid, which regulate the genes responsible for lipid metabolism and adipocyte differentiation. CRABP2 gene is located on chromosome 1q21-23 and this region has been linked with related disorders such as familial combined hyperlipidemia (FCHL) and type 2 diabetes mellitus.Synonyms: CRABP-II, Cellular retinoic acid-binding protein 2, Cellular retinoic acid-binding protein II
Gene ID:	1382
UniProt:	P29373

Application Details

Application Notes:	ELISA. Western blot (1/250-1/1,000). Immunohistochemistry on Paraffin Sections (10 µg/mL). This CRABP2 antibody was validated for use in immunohistochemistry on a panel of 21 formalin-fixed, paraffin-embedded (FFPE) human tissues after heat induced antigen retrieval in pH 6.0 citrate buffer. After incubation with the primary antibody, slides were incubated with biotinylated secondary antibody, followed by alkaline phosphatase-streptavidin and chromogen. Other applications not tested. Optimal dilutions are dependent on conditions and should be determined by the user.
Restrictions:	For Research Use only

Handling

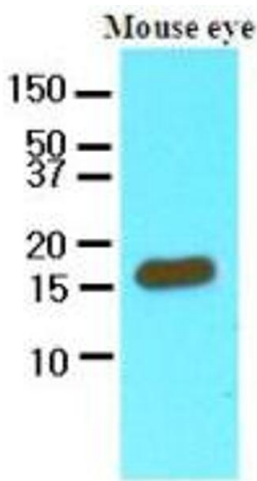
Format:	Liquid
Concentration:	1.0 mg/mL
Buffer:	PBS, pH 7.4, 0.09 % Sodium Azide
Preservative:	Sodium azide
Precaution of Use:	This product contains sodium azide: a POISONOUS AND HAZARDOUS SUBSTANCE which should be handled by trained staff only.
Storage:	4 °C/-20 °C
Storage Comment:	Store the antibody undiluted at 2-8 °C for up to two weeks or (in aliquots) at -20 °C or -70 °C for longer. Avoid repeated freezing and thawing.

Handling

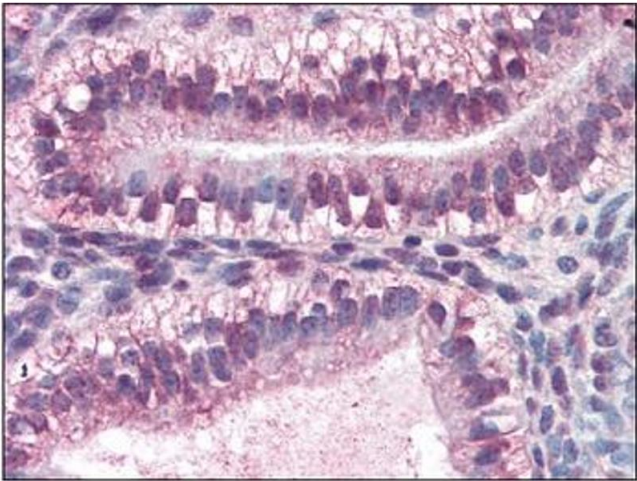
Shelf life: one year from despatch.

Expiry Date: 12 months

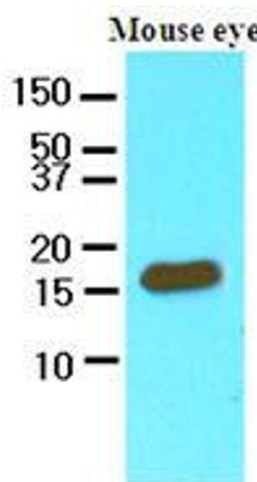
Images



Western Blotting
Image 1.



Immunohistochemistry
Image 2.



Western Blotting
Image 3.