

Datasheet for ABIN356236
anti-PPIF antibody (AA 30-207)

2 Images

[Go to Product page](#)

Overview

Quantity:	0.1 mL
Target:	PPIF
Binding Specificity:	AA 30-207
Reactivity:	Human
Host:	Mouse
Clonality:	Monoclonal
Conjugate:	This PPIF antibody is un-conjugated
Application:	Western Blotting (WB), Immunohistochemistry (Paraffin-embedded Sections) (IHC (p)), Enzyme Immunoassay (EIA)

Product Details

Immunogen:	Recombinant human PPIF (30-207 aa) purified from E. coli
Clone:	AT1F5
Isotype:	IgG2b
Specificity:	The antibody recognizes PPIF.
Cross-Reactivity (Details):	Species reactivity (tested):Human.
Characteristics:	Synonyms: PPIase F, Rotamase F, PPIF, CYP3, mitochondrial Peptidyl-prolyl cis-trans isomerase
Purification:	Protein-G affinity chromatography

Target Details

Target:	PPIF
Alternative Name:	Cyclophilin F (PPIF Products)
Background:	Cyclophilin F (also known as Peptidylprolyl isomerase F, PPIF) is a member of peptidyl-prolyl cis-trans isomerase family. They are highly-conserved cytoplasmic enzymes that accelerate protein folding. This protein is part of the mitochondrial permeability transition pore in the inner mitochondrial membrane. Activation of this pore is thought to be involved in the induction of apoptotic and necrotic cell death. Synonyms: CYP3, PPIF, PPIase F, Rotamase F, mitochondrial Peptidyl-prolyl cis-trans isomerase
Gene ID:	10105
UniProt:	P30405
Pathways:	Proton Transport , Negative Regulation of intrinsic apoptotic Signaling , Negative Regulation of Transporter Activity

Application Details

Application Notes:	ELISA. Western blot (1: 500 - 1: 1,000). Immunohistochemistry on paraffin sections (1: 50 - 1: 100). Other applications not tested. Optimal dilutions are dependent on conditions and should be determined by the user.
Restrictions:	For Research Use only

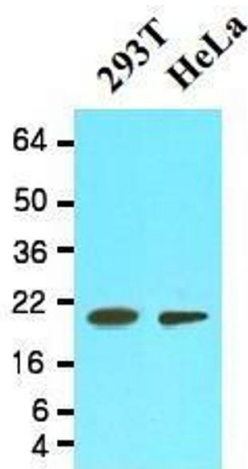
Handling

Format:	Liquid
Concentration:	1.0 mg/mL
Buffer:	PBS, pH 7.4, containing 0.09 % sodium azide
Preservative:	Sodium azide
Precaution of Use:	This product contains sodium azide: a POISONOUS AND HAZARDOUS SUBSTANCE which should be handled by trained staff only.
Storage:	4 °C/-20 °C
Storage Comment:	Store the antibody undiluted at 2-8 °C for up to two weeks or (in aliquots) at -20 °C or -70 °C for longer. Avoid repeated freezing and thawing. Shelf life: one year from despatch.

Handling

Expiry Date: 12 months

Images



Western Blotting

Image 1.

Immunohistochemistry

Image 2.

