

Datasheet for ABIN356378
anti-PRDM2 antibody (N-Term)



[Go to Product page](#)

1 Image

Overview

Quantity:	0.4 mL
Target:	PRDM2
Binding Specificity:	AA 1-347, N-Term
Reactivity:	Human, Mouse
Host:	Mouse
Clonality:	Monoclonal
Conjugate:	This PRDM2 antibody is un-conjugated
Application:	Western Blotting (WB), Enzyme Immunoassay (EIA)

Product Details

Immunogen:	Purified recombinant GST fusion protein encoding aa 1-347 of human RIZ1.
Clone:	33AT1045
Isotype:	IgG1
Specificity:	This antibody is specific for RIZ1, it does not recognize the isoform beta (RIZ2).
Characteristics:	Synonyms: PR domain zinc finger protein 2, KMT8, RIZ1, RIZ2, MTB-ZF, HUMHOXY1, Retinoblastomaprotein-interacting zinc finger protein, MTE-binding protein, GATA-3-binding protein G3B, Lysine N-methyltransferase 8
Purification:	Protein G Chromatography eluted with high and low pH buffers and neutralized immediately, followed by dialysis against PBS.

Target Details

Target:	PRDM2
Alternative Name:	PRDM2 (PRDM2 Products)
Background:	<p>Similar to acetylation and phosphorylation, histone methylation at the N-terminal tail has emerged as an important role in regulating chromatin dynamics and gene activity. Histone methylation occurs on arginine and lysine residues and is catalyzed by two families of proteins, the protein arginine methyltransferase family and the SET-domain-containing methyltransferase family. Five members have been identified in the arginine methyltransferase family. About 27 are grouped into the SET-domain family, and another 17 make up the PR domain family that is related to the SET domain family. The retinoblastoma protein-interacting zinc finger gene RIZ1 is a tumor suppressor gene and a FOUNING member of the PR domain family. RIZ1 inactivation is commonly found in many types of human cancers and occurs through loss of mRNA expression, frame shift mutation, chromosomal deletion, and missense mutation. RIZ1 is also a tumor susceptibility gene in mice. The loss of RIZ1 mRNA in human cancers was shown to associate with DNA methylation of its promoter CpG island. Methylation of the RIZ1 promoter strongly correlated with lost or decreased RIZ1 mRNA expression in breast, liver, colon, and lung cancer cell lines as well as in liver cancer tissues. Synonyms: GATA-3-binding protein G3B, HUMHOXY1, KMT8, Lysine N-methyltransferase 8, MTB-ZF, MTE-binding protein, PR domain zinc finger protein 2, RIZ1, RIZ2, Retinoblastoma protein-interacting zinc finger protein</p>
Gene ID:	7799
UniProt:	Q13029

Application Details

Application Notes:	<p>ELISA: 1/1,000. Western blotting: 1/100-1/500. ChIP (validated by third-party citation).</p> <p>Other applications not tested.</p> <p>Optimal dilutions are dependent on conditions and should be determined by the user.</p>
Restrictions:	For Research Use only

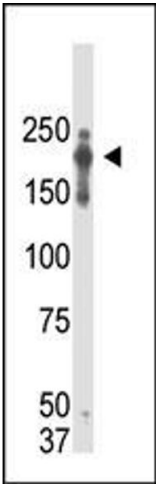
Handling

Format:	Liquid
Concentration:	0.25 mg/mL
Buffer:	PBS containing 0.09 % (W/V) Sodium Azide as preservative.

Handling

Preservative:	Sodium azide
Precaution of Use:	This product contains sodium azide: a POISONOUS AND HAZARDOUS SUBSTANCE which should be handled by trained staff only.
Storage:	4 °C/-20 °C
Storage Comment:	Store the antibody undiluted at 2-8 °C for one month or (in aliquots) at -20 °C for longer. Avoid repeated freezing and thawing. Shelf life: one year from despatch.
Expiry Date:	12 months

Images



Western Blotting

Image 1.