



[Go to Product page](#)

Datasheet for ABIN356530

## anti-PRMT6 antibody (N-Term)

### 2 Images

#### Overview

Quantity:	0.4 mL
Target:	PRMT6
Binding Specificity:	N-Term
Reactivity:	Human
Host:	Rabbit
Clonality:	Polyclonal
Conjugate:	This PRMT6 antibody is un-conjugated
Application:	Western Blotting (WB), Immunohistochemistry (Paraffin-embedded Sections) (IHC (p)), Enzyme Immunoassay (EIA)

#### Product Details

Immunogen:	This antibody is generated from rabbits immunized with a KLH conjugated synthetic peptide in the N-terminal region of human PRMT6.
Isotype:	Ig Fraction
Specificity:	This antibody is specific to PRMT6 (N-term).
Purification:	Protein G Chromatography eluted with high and low pH buffers and neutralized immediately, followed by dialysis against PBS.

#### Target Details

Target:	PRMT6
Alternative Name:	PRMT6 / HRMT1L6 ( <a href="#">PRMT6 Products</a> )

## Target Details

---

**Background:** Arginine methylation is an irreversible post translational modification which has only recently been linked to protein activity. At least three types of PRMT enzymes have been identified in mammalian cells. These enzymes have been shown to have essential regulatory functions by methylation of key proteins in several fundamental areas. These protein include nuclear proteins, IL enhancer binding factor, nuclear factors, cell cycle proteins, signal transduction proteins, apoptosis proteins, and viral proteins. The mammalian PRMT family currently consists of 7 members that share two large domains of homology. Outside of these domains, epitopes were identified and antibodies against all 7 PRMT members have been developed. Synonyms: Heterogeneous nuclear ribonucleoprotein methyltransferase-like protein 6, Histone-arginine N-methyltransferase PRMT6, Protein arginine N-methyltransferase 6

**Gene ID:** 55170, 5874

**UniProt:** [Q96LA8](#)

## Application Details

---

**Application Notes:** ELISA: 1/1,000. Western blotting: 1/100-500. Immunohistochemistry: 1/50-1/100.  
Other applications not tested.  
Optimal dilutions are dependent on conditions and should be determined by the user.

**Restrictions:** For Research Use only

## Handling

---

**Format:** Liquid

**Concentration:** 0.25 mg/mL

**Buffer:** PBS containing 0.09 % (W/V) Sodium Azide as preservative.

**Preservative:** Sodium azide

**Precaution of Use:** This product contains sodium azide: a POISONOUS AND HAZARDOUS SUBSTANCE which should be handled by trained staff only.

**Handling Advice:** Avoid repeated freezing and thawing.

**Storage:** 4 °C/-20 °C

**Storage Comment:** Store the antibody undiluted at 2-8 °C for one month or (in aliquots) at -20 °C for longer.

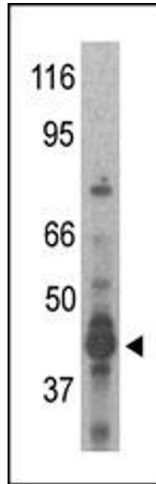


Image 1.

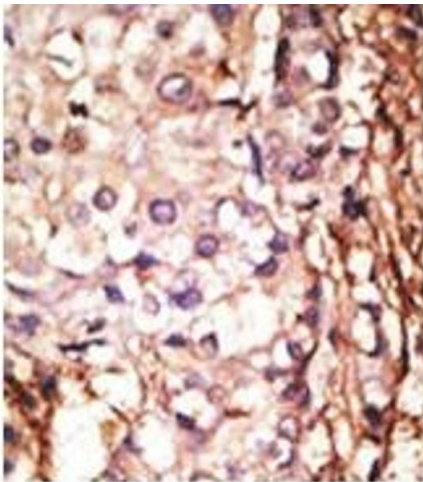


Image 2.