



[Go to Product page](#)

Datasheet for ABIN356540  
**anti-Protein C Tag antibody**

1 Image

### Overview

Quantity:	0.4 mL
Target:	Protein C Tag
Reactivity:	Please inquire
Host:	Rabbit
Clonality:	Polyclonal
Conjugate:	This Protein C Tag antibody is un-conjugated
Application:	Western Blotting (WB), Enzyme Immunoassay (EIA)

### Product Details

Immunogen:	KLH conjugated synthetic peptide encoding the Protein-C epitope tag (CEDQVDPRLIDGK) was used as antigen.
Isotype:	Ig Fraction
Specificity:	This antibody is specific to Protein-C Tag.
Purification:	Protein G Chromatography, eluted with high and low pH buffers and neutralized immediately, followed by dialysis against PBS.

### Target Details

Target:	Protein C Tag
Abstract:	<a href="#">Protein C Tag Products</a>
Target Type:	Tag

## Target Details

---

**Background:** Epitope tags consisting of short sequences recognized by well-characterized antibodies have been widely used in the study of protein expression in various systems. The epitope tag composed of a 12 residue peptide, EDQVDPRLIDGK , is derived from Protein-C, a vitamin K-dependent serine protease that regulates blood coagulation by inactivating factors Va and VIIIa in the presence of calcium ions and phospholipids. This polyclonal antibody provides a simple solution to detect the expression of a Protein-C epitope-tagged protein in cells. Synonyms: C tag, C-Tag, Protein C Epitope tag

---

**Gene ID:** 5624, 5874

---

**UniProt:** [P04070](#)

---

## Application Details

---

**Application Notes:** ELISA: 1/5,000. Western Blot.  
Other applications not tested.  
Optimal dilutions are dependent on conditions and should be determined by the user.

---

**Restrictions:** For Research Use only

---

## Handling

---

**Format:** Liquid

---

**Concentration:** 0.25 mg/mL

---

**Buffer:** PBS containing 0.09 % (W/V) Sodium Azide as preservative.

---

**Preservative:** Sodium azide

---

**Precaution of Use:** This product contains sodium azide: a POISONOUS AND HAZARDOUS SUBSTANCE which should be handled by trained staff only.

---

**Handling Advice:** Avoid repeated freezing and thawing.

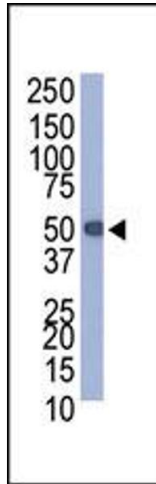
---

**Storage:** 4 °C/-20 °C

---

**Storage Comment:** Store the antibody undiluted at 2-8 °C for one month or (in aliquots) at -20 °C for longer.

---



**Image 1.**