

## Datasheet for ABIN356581

**anti-KDM2A antibody**

## 2 Images

[Go to Product page](#)

## Overview

Quantity:	0.4 mL
Target:	KDM2A
Reactivity:	Human
Host:	Rabbit
Clonality:	Polyclonal
Conjugate:	This KDM2A antibody is un-conjugated
Application:	Western Blotting (WB), Immunohistochemistry (Paraffin-embedded Sections) (IHC (p)), Enzyme Immunoassay (EIA)

## Product Details

Immunogen:	This antibody is generated from rabbits immunized with a KLH conjugated synthetic peptide at the Center of human JHDM1a/FBXL11.
Isotype:	Ig Fraction
Specificity:	This antibody is specific to JHDM1a/FBXL11 (Center). Predicted to cross react with Mouse (100 % Antigen Homology).
Purification:	Saturated Ammonium Sulfate (SAS) precipitation followed by dialysis against PBS.

## Target Details

Target:	KDM2A
Alternative Name:	KDM2A / FBXL11 ( <a href="#">KDM2A Products</a> )
Background:	JHDM1a/FBXL11 is a member of the F-box protein family which is characterized by an

## Target Details

approximately 40 amino acid motif, the F-box. The F-box proteins constitute one of the four subunits of ubiquitin protein ligase complex called SCFs (SKP1-cullin-F-box), which function in phosphorylation-dependent ubiquitination. The F-box proteins are divided into 3 classes: Fbws containing WD-40 domains, Fbls containing leucine-rich repeats, and Fbxs containing either different protein-protein interaction modules or no recognizable motifs. The protein encoded by this gene belongs to the Fbls class and, in addition to an F-box, contains at least 6 highly degenerated leucine-rich repeats. Synonyms: CXXC-type zinc finger protein 8, CXXC8, F-box and leucine-rich repeat protein 11, F-box protein FBL7, F-box protein Lilina, F-box/LRR-repeat protein 11, FBL7, JHDM1A, KIAA1004, Lilina, Lysine-specific demethylase 2A, [Histone-H3]-lysine-36 demethylase 1A

Gene ID: 22992, 9606

UniProt: [Q9Y2K7](#)

Pathways: [Warburg Effect](#)

## Application Details

Application Notes: ELISA: 1/1,000. Western Blot: 1/50-1/100. Immunohistochemistry: 1/10 approx. 1/50.  
Other applications not tested.  
Optimal dilutions are dependent on conditions and should be determined by the user.

Restrictions: For Research Use only

## Handling

Format: Liquid

Concentration: 0.25 mg/mL

Buffer: PBS containing 0.09 % (W/V) Sodium Azide as preservative.

Preservative: Sodium azide

Precaution of Use: This product contains sodium azide: a POISONOUS AND HAZARDOUS SUBSTANCE which should be handled by trained staff only.

Handling Advice: Avoid repeated freezing and thawing.

Storage: 4 °C/-20 °C

Storage Comment: Store the antibody undiluted at 2-8 °C for one month or (in aliquots) at -20 °C for longer.

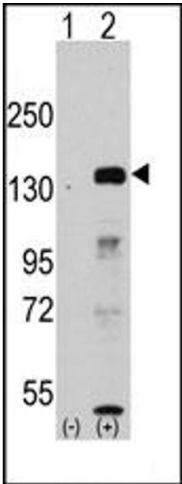


Image 1.

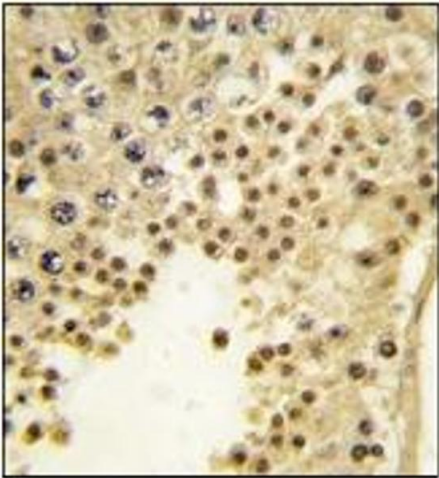


Image 2.