

Datasheet for ABIN356585
anti-KDM4A antibody (N-Term)



[Go to Product page](#)

1 Image

Overview

Quantity:	0.4 mL
Target:	KDM4A
Binding Specificity:	N-Term
Reactivity:	Human
Host:	Rabbit
Clonality:	Polyclonal
Conjugate:	This KDM4A antibody is un-conjugated
Application:	Western Blotting (WB), Enzyme Immunoassay (EIA)

Product Details

Immunogen:	This antibody is generated from rabbits immunized with a KLH conjugated synthetic peptide selected from the N-terminal region of human JMJD2A.
Isotype:	Ig Fraction
Specificity:	This antibody is specific to JMJD2A (N-term).
Purification:	Saturated Ammonium Sulfate (SAS) precipitation followed by dialysis against PBS.

Target Details

Target:	KDM4A
Alternative Name:	JMJD2A / KDM4A (KDM4A Products)
Background:	JMJD2A is a member of the Jumonji domain 2 (JMJD2) family and a protein containing a JmjN

Target Details

domain, a JmjC domain, a JD2H domain, two TUDOR domains, and two PHD-type zinc fingers. This protein functions as a trimethylation-specific demethylase, converting specific trimethylated histone residues to the dimethylated form, and as a transcriptional repressor. Synonyms: JHDM3A, JMJD2, JmjC domain-containing histone demethylation protein 3A, Jumonji domain-containing protein 2A, KIAA0677, Lysine-specific demethylase 4A

Gene ID: 9682, 9606

UniProt: [O75164](#)

Pathways: [Warburg Effect](#)

Application Details

Application Notes: ELISA: 1/1,000. Western Blot: 1/50-1/100.
Other applications not tested.
Optimal dilutions are dependent on conditions and should be determined by the user.

Restrictions: For Research Use only

Handling

Format: Liquid

Concentration: 0.25 mg/mL

Buffer: PBS containing 0.09 % (W/V) Sodium Azide as preservative.

Preservative: Sodium azide

Precaution of Use: This product contains sodium azide: a POISONOUS AND HAZARDOUS SUBSTANCE which should be handled by trained staff only.

Handling Advice: Avoid repeated freezing and thawing.

Storage: 4 °C/-20 °C

Storage Comment: Store the antibody undiluted at 2-8 °C for one month or (in aliquots) at -20 °C for longer.

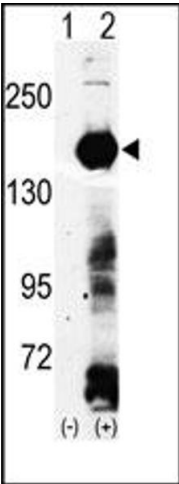


Image 1.