

Datasheet for ABIN356594
anti-UBE2I antibody (N-Term)



[Go to Product page](#)

2 Images

Overview

Quantity:	0.4 mL
Target:	UBE2I
Binding Specificity:	N-Term
Reactivity:	Human
Host:	Rabbit
Clonality:	Polyclonal
Conjugate:	This UBE2I antibody is un-conjugated
Application:	Western Blotting (WB), Immunohistochemistry (Paraffin-embedded Sections) (IHC (p)), Enzyme Immunoassay (EIA)

Product Details

Immunogen:	This antibody is generated from rabbits immunized with a KLH conjugated synthetic peptide selected from the N-terminal region of human UBE2I.
Isotype:	Ig Fraction
Specificity:	This antibody is specific to UBE2I (N-term). Predicted to cross react with Mouse and DANRE (100 % Antigen Homology).
Purification:	Protein G Chromatography, eluted with high and low pH buffers and neutralized immediately, followed by dialysis against PBS.

Target Details

Target:	UBE2I
---------	-------

Target Details

Alternative Name:	UBC9 / UBE2I (UBE2I Products)
Background:	UBE2I (Ubc9) is a member of the E2 family and is specific for the conjugation of SUMO to a variety of target proteins. SUMO conjugation to target proteins is mediated by a different, but analogous, pathway to ubiquitylation. This E2 is unusual in that it interacts directly with protein substrates that are modified by sumoylation, and may play a role in substrate recognition. UBE2I can mediate the conjugation of SUMO-1 to a variety of proteins including RanGAP1, IkbAlpha, and PML without the requirement of an E3 ligase. UBE2I is essential for nuclear architecture and chromosome segregation.Synonyms: SUMO-conjugating enzyme UBC9, SUMO-protein ligase, UBCE9, Ubce2i, Ube2i, Ubiquitin carrier protein 9, Ubiquitin carrier protein I, Ubiquitin-conjugating enzyme E2 I, Ubiquitin-protein ligase I
Gene ID:	7329, 9606
UniProt:	P63279
Pathways:	Intracellular Steroid Hormone Receptor Signaling Pathway , Regulation of Intracellular Steroid Hormone Receptor Signaling , Ubiquitin Proteasome Pathway

Application Details

Application Notes:	ELISA: 1/1,000. Western blot: 1/100approx. 1/500. Immunohistochemistry: 1/50approx. 1/100. Other applications not tested. Optimal dilutions are dependent on conditions and should be determined by the user.
Restrictions:	For Research Use only

Handling

Format:	Liquid
Concentration:	0.25 mg/mL
Buffer:	PBS containing 0.09 % (W/V) Sodium Azide as preservative.
Preservative:	Sodium azide
Precaution of Use:	This product contains sodium azide: a POISONOUS AND HAZARDOUS SUBSTANCE which should be handled by trained staff only.
Handling Advice:	Avoid repeated freezing and thawing.
Storage:	4 °C/-20 °C
Storage Comment:	Store the antibody undiluted at 2-8 °C for one month or (in aliquots) at-20 °C for longer.

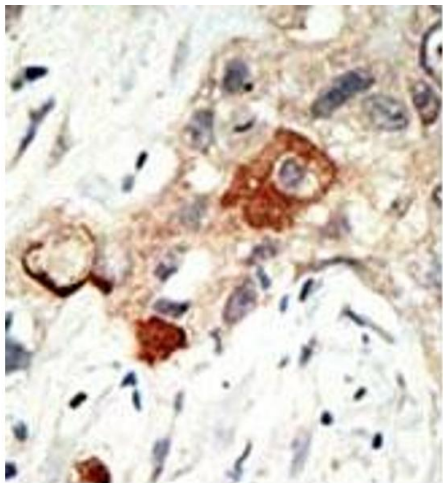


Image 1.

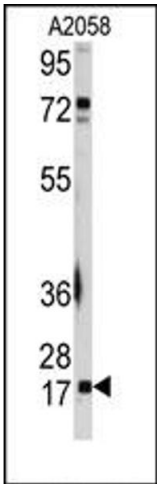


Image 2.