

Datasheet for ABIN356610
anti-EHMT1 antibody (AA 956-986)



[Go to Product page](#)

1 Image

Overview

Quantity:	0.4 mL
Target:	EHMT1
Binding Specificity:	AA 956-986
Reactivity:	Human
Host:	Rabbit
Clonality:	Polyclonal
Conjugate:	This EHMT1 antibody is un-conjugated
Application:	Western Blotting (WB), Enzyme Immunoassay (EIA)

Product Details

Immunogen:	KLH conjugated synthetic peptide between 956~986 amino acids from the Center region of Human EUHMTASE1
Isotype:	Ig Fraction
Specificity:	This antibody is specific to Human EUHMTASE1 (Center).
Purification:	Protein G Chromatography, eluted with high and low pH buffers and neutralized immediately, followed by dialysis against PBS

Target Details

Target:	EHMT1
Alternative Name:	EHMT1 (EHMT1 Products)

Target Details

Background: EHMT1, also known as EUHMTASE1, is a histone methyltransferase. This protein methylates 'Lys-9' of histone H3 in vitro. H3 'Lys-9' methylation represents a specific tag for epigenetic transcriptional repression by recruiting HP1 proteins to methylated histones. EHMT1 is Probably targeted to histone H3 by different DNA-binding proteins like E2F6, MGA, MAX and/or DP1. During G0 phase, it probably contributes to silencing of MYC- and E2F-responsive genes, suggesting a role in the G0/G1 transition of the cell cycle. Synonyms: EUHMTASE1, Eu-HMTase1, Euchromatic histone-lysine N-methyltransferase 1, G9a-like protein 1, GLP, GLP1, H3-K9-HMTase 5, Histone H3-K9 methyltransferase 5, Histone-lysine N-methyltransferase EHMT1, KIAA1876, KMT1D, Lysine N-methyltransferase 1D

Gene ID: 79813, 9606

UniProt: [Q9H9B1](#)

Application Details

Application Notes: ELISA: 1/1,000.
Other applications not tested.
Optimal dilutions are dependent on conditions and should be determined by the user.

Restrictions: For Research Use only

Handling

Format: Liquid

Concentration: 0.25 mg/mL

Buffer: PBS containing 0.09 % (W/V) Sodium Azide as preservative

Preservative: Sodium azide

Precaution of Use: This product contains sodium azide: a POISONOUS AND HAZARDOUS SUBSTANCE which should be handled by trained staff only.

Handling Advice: Avoid repeated freezing and thawing.

Storage: 4 °C/-20 °C

Storage Comment: Store undiluted at 2-8 °C for one month or (in aliquots) at -20 °C for longer.

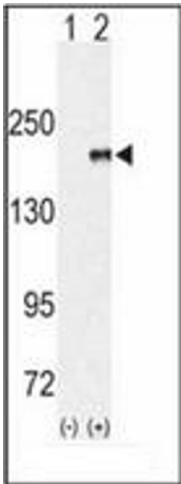


Image 1.