

Datasheet for ABIN356636  
**anti-SLC29A4 antibody (N-Term)**

## 2 Images

[Go to Product page](#)

## Overview

Quantity:	0.4 mL
Target:	SLC29A4
Binding Specificity:	N-Term
Reactivity:	Human
Host:	Rabbit
Clonality:	Polyclonal
Conjugate:	This SLC29A4 antibody is un-conjugated
Application:	Western Blotting (WB), Immunohistochemistry (Paraffin-embedded Sections) (IHC (p)), Enzyme Immunoassay (EIA)

## Product Details

Immunogen:	This antibody is generated from rabbits immunized with a KLH conjugated synthetic peptide selected from the N-terminal region of human SLC29A4.
Isotype:	Ig Fraction
Specificity:	This antibody is specific to PMAT(Slc29a4) (N-term).
Purification:	Protein G Chromatography, eluted with high and low pH buffers and neutralized immediately, followed by dialysis against PBS.

## Target Details

Target:	SLC29A4
Alternative Name:	SLC29A4 / ENT4 ( <a href="#">SLC29A4 Products</a> )

## Target Details

Background:	PMAT(Slc29a4) is a member of the SLC29 family. It is a plasma membrane protein with 11 transmembrane helices. This protein catalyzes the reuptake of monoamines into presynaptic neurons, thus determining the intensity and duration of monoamine neural signaling. It has been shown to transport several compounds, including serotonin, dopamine, and the neurotoxin 1-methyl-4-phenylpyridinium. Synonyms: Equilibrative nucleoside transporter 4, PMAT, Plasma membrane monoamine transporter, Solute carrier family 29 member 4
Gene ID:	243328, 10090
UniProt:	<a href="#">Q8R139</a>

## Application Details

Application Notes:	ELISA: 1/1,000. Western Blot: 1-50-1/100. Immunohistochemistry: 1/10-1/50. Other applications not tested. Optimal dilutions are dependent on conditions and should be determined by the user.
Restrictions:	For Research Use only

## Handling

Format:	Liquid
Concentration:	0.25 mg/mL
Buffer:	PBS containing 0.09 % (W/V) Sodium Azide as preservative.
Preservative:	Sodium azide
Precaution of Use:	This product contains sodium azide: a POISONOUS AND HAZARDOUS SUBSTANCE which should be handled by trained staff only.
Handling Advice:	Avoid repeated freezing and thawing.
Storage:	4 °C/-20 °C
Storage Comment:	Store the antibody undiluted at 2-8 °C for one month or (in aliquots) at -20 °C for longer.

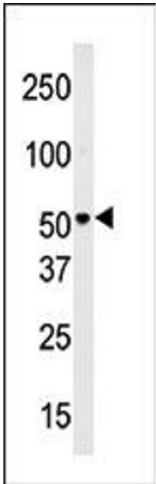


Image 1.

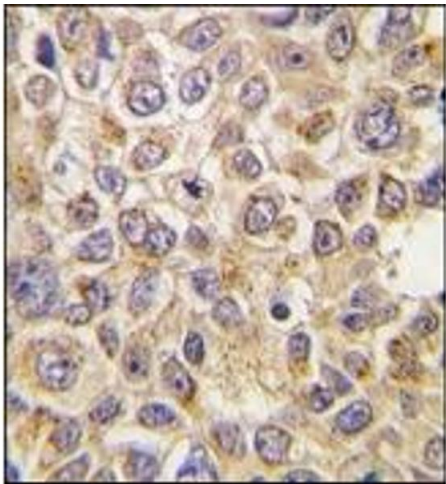


Image 2.