

Datasheet for ABIN356666
anti-MYST1 antibody (C-Term)[Go to Product page](#)

2 Images

Overview

Quantity:	0.4 mL
Target:	MYST1 (KAT8)
Binding Specificity:	C-Term
Reactivity:	Human
Host:	Rabbit
Clonality:	Polyclonal
Conjugate:	This MYST1 antibody is un-conjugated
Application:	Western Blotting (WB), Immunohistochemistry (Paraffin-embedded Sections) (IHC (p)), Enzyme Immunoassay (EIA)

Product Details

Immunogen:	This antibody is generated from rabbits immunized with a KLH conjugated synthetic peptide at the C-term of human HMOF/MYST1.
Isotype:	Ig Fraction
Specificity:	This antibody is specific to HMOF/MYST1 (C-term).
Purification:	Saturated Ammonium Sulfate (SAS) precipitation followed by dialysis against PBS.

Target Details

Target:	MYST1 (KAT8)
Alternative Name:	MYST1 (KAT8 Products)

Target Details

Background: The MYST family of histone acetyltransferases, which includes MYST1, is named for the founding members MOZ (MYST3, MIM 601408), yeast YBF2 and SAS2, and TIP60 (HTATIP, MIM 601409). All members of this family contain a MYST region of about 240 amino acids with a canonical acetyl-CoA-binding site and a C2HC-type zinc finger motif. Most MYST proteins also have a chromodomain involved in protein-protein interactions and targeting transcriptional regulators to chromatin (Neal et al., 2000 [PubMed 10786633]).[supplied by OMIM].Synonyms: HMOF, MOF, PP7073, Probable histone acetyltransferase MYST1, SAS2, TIP60 protein 1, YBF2/SAS3

Gene ID: 84148, 9606

UniProt: [Q9H7Z6](#)

Application Details

Application Notes: ELISA: 1/1,000. Western blot: 1/50-1/100. Immunohistochemistry: 1/10-1/50.
Other applications not tested.
Optimal dilutions are dependent on conditions and should be determined by the user.

Restrictions: For Research Use only

Handling

Format: Liquid

Concentration: 0.25 mg/mL

Buffer: PBS containing 0.09 % (W/V) Sodium Azide as preservative.

Preservative: Sodium azide

Precaution of Use: This product contains sodium azide: a POISONOUS AND HAZARDOUS SUBSTANCE which should be handled by trained staff only.

Handling Advice: Avoid repeated freezing and thawing.

Storage: 4 °C/-20 °C

Storage Comment: Store the antibody undiluted at 2-8 °C for one month or (in aliquots) at -20 °C for longer.

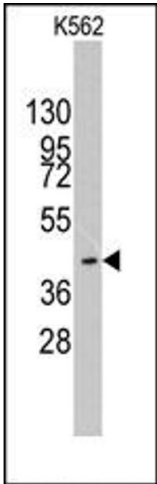


Image 1.

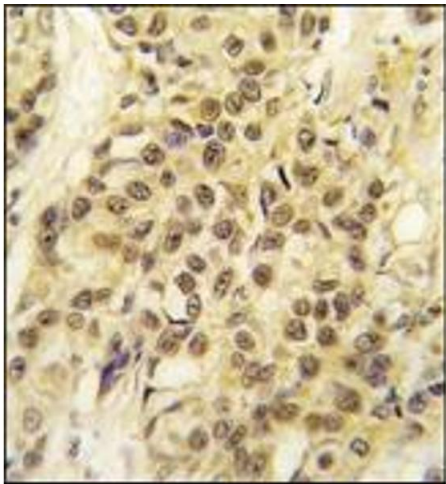


Image 2.